

Recombinant Human FGF10 protein, Biotinylated(Primary Amine Labeling)

Cat. No. FGF10-6743H Lot. No. (See product label)

SPECIFICATION

Product Overview	Biotinylated Recombinant Human FGF10 protein(O15520)(Gln38-Ser208)(Primary Amine Labeling) was expressed in E.coli.
Species	Human
Source	E.coli
ProteinLength	Gln38-Ser208
Tag	Non
Conjugation/Label	Biotin; Primary Amine
Form	Lyophilized from 0.22µm filtered solution in 20mM Tris,150mM NaCl (pH 8.0). Normally 8% trehalose is added as protectant before lyophilization.
Bio-activity	Serial dilutions of Anti-FGFR2 alpha (IIIb) Antibody were added into Human FGFR2 alpha (IIIb) , His Tag : Biotinylated Human FGF10, No Tag binding reactions. The half maximal inhibitory concentration (IC50) is 0.7ng/ml.
Molecular Mass	The protein has a predicted MW of 19.3 kDa same as Tris-Bis PAGE result.
Endotoxin	Less than 1EU per µg by the LAL method.

 Tel: 1-631-559-9269 1-516-512-3133

 Email: info@creative-biomart.com  Fax: 1-631-938-8127

 45-1 Ramsey Road, Shirley, NY 11967, USA

Purity	> 90% as determined by Tris-Bis PAGE; > 95% as determined by HPLC
Storage	Reconstituted protein stable at -80°C for 12 months, 4°C for 1 week. Use a manual defrost freezer and avoid repeated freeze-thaw cycles.
Reconstitution	Centrifuge tubes before opening. Reconstituting to a concentration more than 100 µg/ml is recommended. Dissolve the lyophilized protein in distilled water.
Conjugation	Biotin

GENE INFORMATION

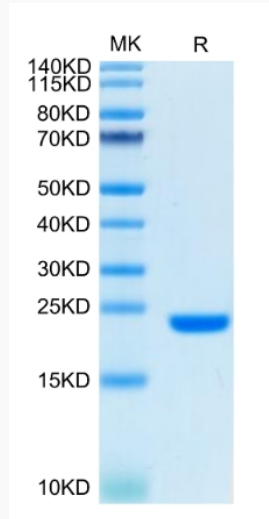
Gene Name	FGF10 fibroblast growth factor 10 [Homo sapiens]
Official Symbol	FGF10
Synonyms	FGF10; fibroblast growth factor 10; FGF-10; keratinocyte growth factor 2; produced by fibroblasts of urinary bladder lamina propria;
Gene ID	2255
mRNA Refseq	NM_004465
Protein Refseq	NP_004456
MIM	602115
UniProt ID	O15520

 Tel: 1-631-559-9269 1-516-512-3133

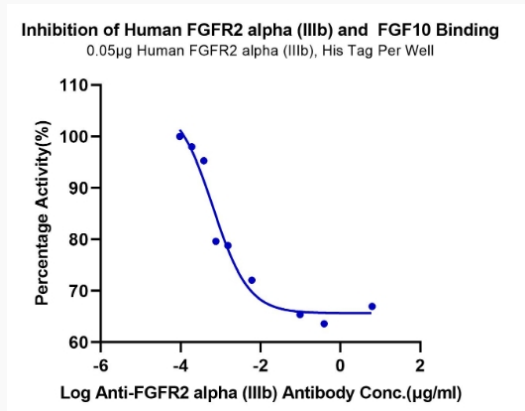
 Email: info@creative-biomart.com  Fax: 1-631-938-8127

 45-1 Ramsey Road, Shirley, NY 11967, USA

Tris-Bis PAGE



Blocking Data



 Tel: 1-631-559-9269 1-516-512-3133

 Email: info@creative-biomart.com  Fax: 1-631-938-8127

 45-1 Ramsey Road, Shirley, NY 11967, USA