

Recombinant Human FGF11 Protein, GST-tagged

Cat. No. FGF11-4101H **Lot. No.** (See product label)

SPECIFICATION

Product Overview	Human FGF11 partial ORF (NP_004103, 15 a.a. - 103 a.a.) recombinant protein with GST-tag at N-terminal.
Species	Human
Source	Wheat Germ
Description	The protein encoded by this gene is a member of the fibroblast growth factor (FGF) family. FGF family members possess broad mitogenic and cell survival activities, and are involved in a variety of biological processes, including embryonic development, cell growth, morphogenesis, tissue repair, tumor growth and invasion. The function of this gene has not yet been determined. The expression pattern of the mouse homolog implies a role in nervous system development. [provided by RefSeq]
Molecular Mass	35.53 kDa
AA Sequence	VREPGGSRPVSAQRRVCPRGKSLCQKQLLILLSKVRLCGGRPARPDRGPEPQLK GIVTKLFCRQGFYLANPDGSIQGTPEDTSSFTH
Applications	Enzyme-linked Immunoabsorbent Assay Western Blot (Recombinant protein) Antibody Production Protein Array
Notes	Best use within three months from the date of receipt of this protein.

 Tel: 1-631-559-9269 1-516-512-3133

 Email: info@creative-biomart.com  Fax: 1-631-938-8127

 45-1 Ramsey Road, Shirley, NY 11967, USA

Storage Store at -80 centigrade. Aliquot to avoid repeated freezing and thawing.

Storage Buffer 50 mM Tris-HCl, 10 mM reduced Glutathione, pH=8.0 in the elution buffer.

GENE INFORMATION

Gene Name FGF11 fibroblast growth factor 11 [Homo sapiens]

Official Symbol FGF11

Synonyms FGF11; fibroblast growth factor 11; FHF3; fibroblast growth factor homologous factor 3; FLJ16061; MGC45269; MGC102953; FHF-3; FGF-11;

Gene ID 2256

mRNA Refseq NM_004112

Protein Refseq NP_004103

MIM 601514

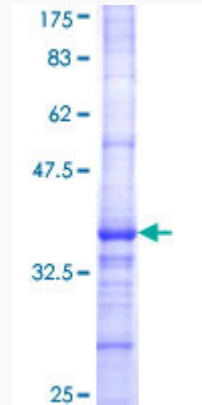
UniProt ID Q92914

 Tel: 1-631-559-9269 1-516-512-3133

 Email: info@creative-biomart.com  Fax: 1-631-938-8127

 45-1 Ramsey Road, Shirley, NY 11967, USA

**Quality Control
Testing**



12.5% SDS-PAGE Stained with Coomassie Blue.

 Tel: 1-631-559-9269 1-516-512-3133

 Email: info@creative-biomart.com  Fax: 1-631-938-8127

 45-1 Ramsey Road, Shirley, NY 11967, USA