

## Recombinant Human FGF16 protein

Cat. No. FGF16-168H Lot. No. (See product label)

### SPECIFICATION

**Product Overview** Recombinant Human FGF16 protein was expressed in Escherichia coli.

**Species** Human

**Source** E.coli

**ProteinLength** 206

**Description** Fibroblast growth factor 16 (FGF-16) belongs to the large FGF family. All FGF family members are heparin-binding growth factors with a core 120 amino acid (a.a.) FGF domain that allows for a common tertiary structure. FGF-16 was originally identified in rat heart tissue by homology based polymerase chain reaction. Human FGF-16 cDNA predicts a 207 aa precursor protein with one N-linked glycosylation site. FGF-16 lacks a typical signal peptide, but is efficiently generated by mechanisms other than the classical protein secretion pathway. Among FGF family members, FGF-16 is most similar to FGF-9, sharing 73% aa sequence homology. Human FGF-16 shares 99% and 98.6% aa sequence identity with the mouse and rat FGF-16, respectively.

**Form** Supplied as a 0.2µm filtered solution in 20 mM Tris-HCl, 1 M NaCl, pH 9.0, with 0.02 % Tween-20, 10 % Glycerol.

**Bio-activity** Fully biologically active when compared to standard. The ED50 as determined by thymidine uptake assay using FGF-receptors transfected BaF3 cells is less than 0.5 ng/ml, corresponding to a specific activity of  $> 2.0 \times 10^6$  IU/mg.

 Tel: 1-631-559-9269 1-516-512-3133

 Email: [info@creative-biomart.com](mailto:info@creative-biomart.com)  Fax: 1-631-938-8127

 45-1 Ramsey Road, Shirley, NY 11967, USA

<b>Molecular Mass</b>	Approximately 23.6 kDa, a single non-glycosylated polypeptide chain containing 206 amino acids.
<b>AA Sequence</b>	AEVGGVFASLDWDLHGFSSSLGNVPLADSPGFLNERLGQIEGKLQRGSPTDFAHLK GILRRRQLYCRTGFHLEIFPNGTVHGTRHDHSRFGILEFISLAVGLISIRGVDSGLYLG MNERGELYGSKKLTRECVFREQFEENWYNTYASTLYKHSDSERQYYVALNKDGP REGYRTRKHQKFTHFLPRPVDPSKLPMSRDLFHYR
<b>Endotoxin</b>	Less than 0.1 EU/g of rHuFGF-16 as determined by LAL method.
<b>Purity</b>	>98% by SDS-PAGE and HPLC analysis.
<b>Storage</b>	Use a manual defrost freezer and avoid repeated freeze-thaw cycles. 6 months from date of receipt, -20 to -70 centigrade as supplied. 3 months, -20 to -70 centigrade under sterile conditions after opening.

## GENE INFORMATION

<b>Gene Name</b>	FGF16
<b>Official Symbol</b>	FGF16
<b>Synonyms</b>	FGF16; fibroblast growth factor 16; FGF-16;
<b>Gene ID</b>	8823
<b>mRNA Refseq</b>	NM_003868
<b>Protein Refseq</b>	NP_003859
<b>MIM</b>	300827

 Tel: 1-631-559-9269 1-516-512-3133

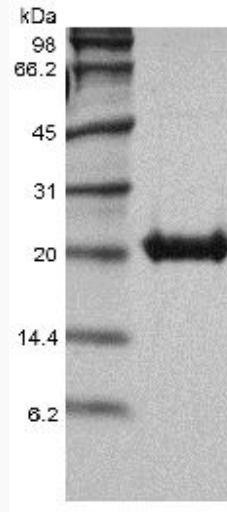
 Email: [info@creative-biomart.com](mailto:info@creative-biomart.com)  Fax: 1-631-938-8127

 45-1 Ramsey Road, Shirley, NY 11967, USA

UniProt ID

O43320

SDS-PAGE of FGF16-  
168H



 Tel: 1-631-559-9269 1-516-512-3133

 Email: [info@creative-biomart.com](mailto:info@creative-biomart.com)  Fax: 1-631-938-8127

 45-1 Ramsey Road, Shirley, NY 11967, USA