

Recombinant Human FGF16 Protein, GST-tagged

Cat. No. FGF16-4105H **Lot. No.** (See product label)

SPECIFICATION

Product Overview	Human FGF16 full-length ORF (NP_003859.1, 1 a.a. - 207 a.a.) recombinant protein with GST-tag at N-terminal.
Species	Human
Source	Wheat Germ
Description	The protein encoded by this gene is a member of the fibroblast growth factor (FGF) family. FGF family members possess broad mitogenic and cell survival activities, and are involved in a variety of biological processes, including embryonic development, cell growth, morphogenesis, tissue repair, tumor growth and invasion. The rat homolog is predominantly expressed in embryonic brown adipose tissue and has significant mitogenic activity, which suggests a role in proliferation of embryonic brown adipose tissue. [provided by RefSeq]
Molecular Mass	50.2 kDa
AA Sequence	MAEVGGVFASLDWDLHGFSSSLGNVPLADSPGFLNERLGQIEGKLQRGSPTDFAHL KGILRRRQLYCRTGFHLEIFPNGTVHGRHDHSRFGILEFISLAVGLISIRGVDSGLYL GMNERGELYGSKKLTRECVFREQFEENWYNTYASTLYKHSDSERQYYVALNKDGS PREGYRTKRHQKFTHFLPRPVDPSKLPMSRDLFHRYR
Applications	Enzyme-linked Immunoabsorbent Assay Western Blot (Recombinant protein) Antibody Production

 Tel: 1-631-559-9269 1-516-512-3133

 Email: info@creative-biomart.com  Fax: 1-631-938-8127

 45-1 Ramsey Road, Shirley, NY 11967, USA

Protein Array

Notes	Best use within three months from the date of receipt of this protein.
Storage	Store at -80 centigrade. Aliquot to avoid repeated freezing and thawing.
Storage Buffer	50 mM Tris-HCl, 10 mM reduced Glutathione, pH=8.0 in the elution buffer.

GENE INFORMATION

Gene Name	FGF16 fibroblast growth factor 16 [Homo sapiens]
Official Symbol	FGF16
Synonyms	FGF16; fibroblast growth factor 16; FGF-16;
Gene ID	8823
mRNA Refseq	NM_003868
Protein Refseq	NP_003859
MIM	300827
UniProt ID	O43320

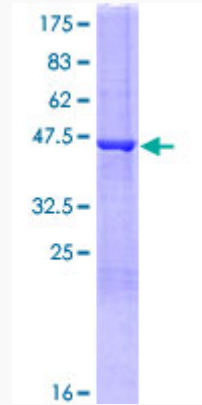
 Tel: 1-631-559-9269 1-516-512-3133

 Email: info@creative-biomart.com  Fax: 1-631-938-8127

 45-1 Ramsey Road, Shirley, NY 11967, USA



**Quality Control
Testing**



12.5% SDS-PAGE Stained with Coomassie Blue.

Tel: 1-631-559-9269 1-516-512-3133

Email: info@creative-biomart.com Fax: 1-631-938-8127

45-1 Ramsey Road, Shirley, NY 11967, USA