

Recombinant Bovine/Porcine FGF2 Protein

Cat. No. FGF2-06B **Lot. No.** (See product label)

SPECIFICATION

Product Overview	<p>Recombinant bovine/porcine FGF-2 (bFGF) 145aa protein without tag was expressed in E. coli.</p> <p>Animal origin-free (AOF) and carrier protein-free.</p> <p>Mass spectrometry: single species with expected mass.</p> <p>Recovery from stock vial: >95%</p>
Species	Bovine/Porcine
Source	E.coli
ProteinLength	145 aa
Description	Plays an important role in the regulation of cell survival, cell division, cell differentiation and cell migration.
Molecular Mass	16 kDa
Endotoxin	<0.005 EU/μg protein (below level of detection)
Applications	Bovine and porcine Stem cell Expansion and maintenance; primary cell culture; cellular agriculture process development
Storage	Prepare single use aliquots, add carrier protein if desired, store frozen at -20 or -80 centigrade

 Tel: 1-631-559-9269 1-516-512-3133

 Email: info@creative-biomart.com  Fax: 1-631-938-8127

 45-1 Ramsey Road, Shirley, NY 11967, USA

Storage Buffer Frozen in PBS

GENE INFORMATION

Gene Name FGF2 fibroblast growth factor 2 [Bos taurus (cattle)]

Official Symbol FGF2

Synonyms FGF2; fibroblast growth factor 2; BFGF; FGF-2; HBGF-2; fibroblast growth factor 2; basic fibroblast growth factor; fibroblast growth factor 2 (basic); heparin-binding growth factor 2

Gene ID 281161

mRNA Refseq NM_174056

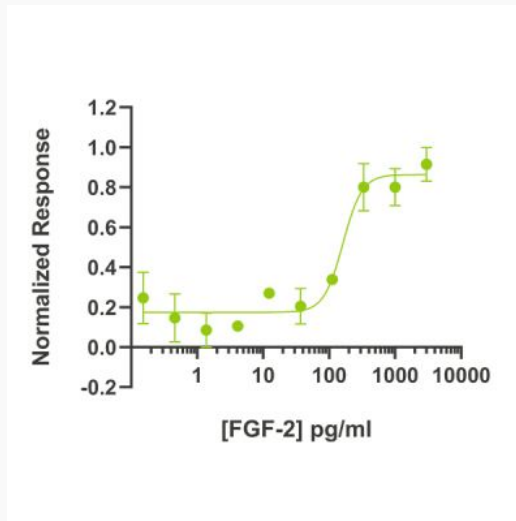
Protein Refseq NP_776481

UniProt ID P03969

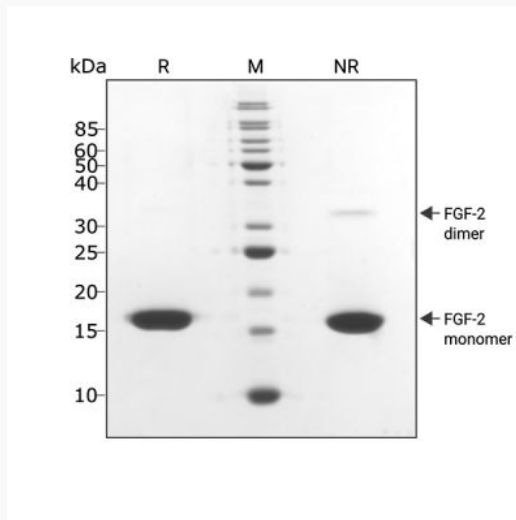
 Tel: 1-631-559-9269 1-516-512-3133

 Email: info@creative-biomart.com  Fax: 1-631-938-8127

 45-1 Ramsey Road, Shirley, NY 11967, USA

Bioactivity


FGF-2 activity is determined using the serum response element luciferase reporter assay in transfected HEK293T cells. EC₅₀ = 160 pg/ml (10 pM). Cells are treated in triplicate with a serial dilution of FGF-2 for 3 hours. Firefly luciferase activity is measured and normalized to the control Renilla luciferase activity.

Purity


Tel: 1-631-559-9269 1-516-512-3133

Email: info@creative-biomart.com Fax: 1-631-938-8127

45-1 Ramsey Road, Shirley, NY 11967, USA



Bovine/porcine FGF-2 migrates as a single major band at 16 kDa in non-reducing conditions and some dimeric protein migrating at 32 kDa. Upon reduction (R), only the 16 kDa band is visible. No contaminating protein bands are visible.

Purified recombinant protein was resolved using 15% w/v SDS-PAGE in reduced and non-reduced conditions and stained with Coomassie Brilliant Blue R250.

 Tel: 1-631-559-9269 1-516-512-3133

 Email: info@creative-biomart.com  Fax: 1-631-938-8127

 45-1 Ramsey Road, Shirley, NY 11967, USA