

Active Recombinant Bovine FGF2 protein, His-tagged

Cat. No. FGF2-2185C Lot. No. (See product label)

SPECIFICATION

Product Overview	Active Recombinant Bovine FGF2 protein(P03969)(10~155 aa), fused with N-terminal His tag, was expressed in E.coli.
Species	Bovine
Source	E.coli
ProteinLength	10-155 aa
Form	Lyophilized from sterile 20mM Tris, 150mM NaCl, pH8.0, containing 1mM EDTA, 1mM DTT, 0.01% SKL, 5% Trehalose and Proclin300.
Bio-activity	<p>Basic fibroblast growth factor (FGF2), also known as bFGF, FGF-β is a member of a large family of structurally related heparin-binding proteins (the FGFs) involved in the regulation of cell proliferation, growth and differentiation. It involved in many biological processes including angiogenesis, embryonic development and wound healing.</p> <p>Additionally, FGF2 is a critical component of human embryonic stem cell culture medium. Besides, Caspase 1 (CASP1) has been identified as an interactor of FGF2, thus a binding ELISA assay was conducted to detect the interaction of recombinant bovine FGF2 and recombinant bovine CASP1. Briefly, FGF2 were diluted serially in PBS, with 0.01% BSA (pH 7.4). Duplicate samples of 100uL were then transferred to CASP1-coated microtiter wells and incubated for 2h at 37°C. Wells were washed with PBST and incubated for 1h with anti-FGF2 pAb, then aspirated and washed 3 times. After incubation with HRP labelled secondary antibody, wells were aspirated and</p>

 Tel: 1-631-559-9269 1-516-512-3133

 Email: info@creative-biomart.com  Fax: 1-631-938-8127

 45-1 Ramsey Road, Shirley, NY 11967, USA

washed 3 times. With the addition of substrate solution, wells were incubated 15-25 minutes at 37°C. Finally, add 50μ stop solution to the wells and read at 450nm immediately. The binding activity of FGF2 and CASP1 was shown, and this effect was in a dose dependent manner.

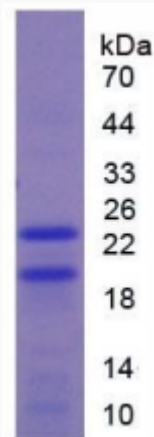
Molecular Mass 20.1kDa

Purity > 97% as determined by SDS-PAGE.

Storage Avoid repeated freeze/thaw cycles. Store at -20°C for 12 months. Aliquot and store at -80°C for 12 months.

Reconstitution Reconstitute in 20mM Tris, 150mM NaCl (pH8.0) to a concentration of 0.1-1.0 mg/mL. Do not vortex.

SDS-PAGE

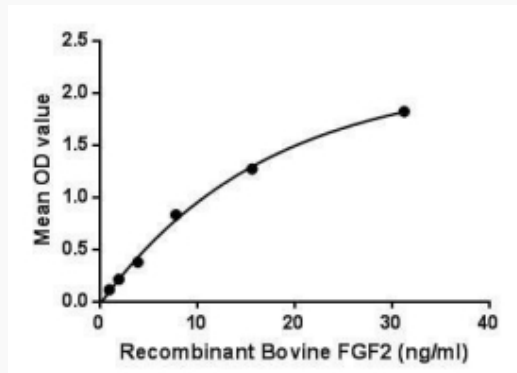


 Tel: 1-631-559-9269 1-516-512-3133

 Email: info@creative-biomart.com  Fax: 1-631-938-8127

 45-1 Ramsey Road, Shirley, NY 11967, USA

Activity



 Tel: 1-631-559-9269 1-516-512-3133

 Email: info@creative-biomart.com  Fax: 1-631-938-8127

 45-1 Ramsey Road, Shirley, NY 11967, USA