

Recombinant Active Human FGF20 Protein, His-tagged(C-ter)

Cat. No. FGF20-80H Lot. No. (See product label)

SPECIFICATION

Product Overview	Recombinant Active Human FGF20 Protein with His tag (C-ter) was expressed in E. coli.
Species	Human
Source	E.coli
Description	The protein encoded by this gene is a member of the fibroblast growth factor family. The fibroblast growth factors possess broad mitogenic and cell survival activities, and are involved in a variety of biological processes including embryonic development, cell growth, morphogenesis, tissue repair, tumor growth and invasion. This gene product is a secreted neurotrophic factor but lacks a typical signal peptide. It is expressed in normal brain, particularly the cerebellum, and may regulate central nervous system development and function. Homodimerization of this protein was shown to regulate its receptor binding activity and concentration gradient in the extracellular matrix. Genetic variations of this gene have been associated with Parkinson disease susceptibility. [provided by RefSeq, Oct 2009]
Form	Powder
Bio-activity	Determined by its ability to induce 3T3 cells proliferation. The ED50 for this effect is 1.3-3.2 ng/mL. The specific activity of recombinant human FGF-20 is > 2 x 10 ⁵ IU/mg.
AA Sequence	MPLAEVGGFLGGLEGLGQQVGSFLLPPAGERPPLLGERRSAAERSARGGPGAAQ

 Tel: 1-631-559-9269 1-516-512-3133

 Email: info@creative-biomart.com  Fax: 1-631-938-8127

 45-1 Ramsey Road, Shirley, NY 11967, USA



LAHLHGILRRRQLYCRTGFHLQILPDGVSQGTRQDHSFLGILEFISVAVGLVSIRGVD
 SGLYLGMNDKGELYGSEKLTSECIFREQFEENWYNTYSSNIYKHGDTGRRYFVALN
 KDGTPRDGARSKRHQKFTHFLPRPVDPERVPELYKDLLMYT

Endotoxin Endotoxin level is less than 0.1 EU/μg of the protein, as determined by the LAL test.

Purity > 98% (by SDS-PAGE)

Applications SDS-PAGE

Notes For laboratory research only, not for drug, diagnostic or other use.

Storage Lyophilized protein should be stored at -20°C. After reconstitution, aliquot and store at -20°C or -80°C for up to one month. Storage in frost free freezers is not recommended. Avoid repeated freeze/thaw cycles. Suggest spin the vial prior to opening.

Storage Buffer PBS (pH 8.0)

Reconstitution It is recommended to reconstitute the lyophilized protein in sterile water to a concentration not less than 100 μg/mL and incubate the stock solution for at least 20 min at room temperature to make sure the protein is dissolved completely.

GENE INFORMATION

Gene Name FGF20 fibroblast growth factor 20 [Homo sapiens]

Official Symbol FGF20

Synonyms FGF20; fibroblast growth factor 20; FGF-20;

Tel: 1-631-559-9269 1-516-512-3133

Email: info@creative-biomart.com Fax: 1-631-938-8127

45-1 Ramsey Road, Shirley, NY 11967, USA

Gene ID 26281

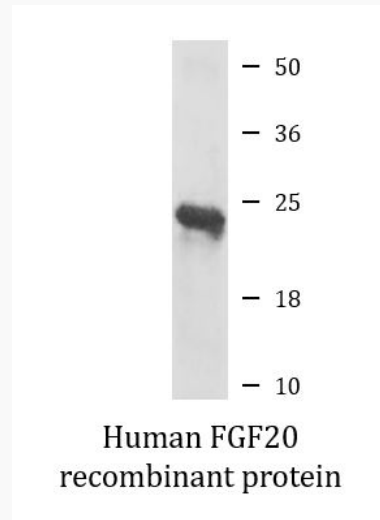
mRNA Refseq NM_019851

Protein Refseq NP_062825

MIM 605558

UniProt ID Q9NP95

SDS-PAGE



 Tel: 1-631-559-9269 1-516-512-3133

 Email: info@creative-biomart.com  Fax: 1-631-938-8127

 45-1 Ramsey Road, Shirley, NY 11967, USA