

Recombinant Human FGF21 Protein, His29-Ser209, N-mFc-Avi tagged, Biotinylated

Cat. No. FGF21-089H **Lot. No.** (See product label)

SPECIFICATION

Product Overview	Recombinant human FGF21-N-mFc-Avi protein was developed from HEK293 and has a target region of N-mFc-Avi.
Species	Human
Source	HEK293
ProteinLength	His29-Ser209
Description	This gene encodes a member of the fibroblast growth factor (FGF) family. FGF family members possess broad mitogenic and cell survival activities and are involved in a variety of biological processes. This protein is a secreted endocrine factor that functions as a major metabolic regulator. The encoded protein stimulates the uptake of glucose in adipose tissue.
Conjugation/Label	Biotin
Form	Lyophilised
Endotoxin	Endotoxin level was found to be less than 0.1 ng/μg (1 EU/μg).
Notes	FOR RESEARCH USE ONLY (RUO).
Storage	The lyophilized protein is stable for at least 1 year from date of receipt at -20

 Tel: 1-631-559-9269 1-516-512-3133

 Email: info@creative-biomart.com  Fax: 1-631-938-8127

 45-1 Ramsey Road, Shirley, NY 11967, USA

centigrade.

Storage Buffer

Lyophilised from 0.2 µm filtered PBS solution pH 7.4. Upon receipt centrifuge vial to ensure maximal product extraction, recommended: 20 sec, 5K RPM

Conjugation

Biotin

GENE INFORMATION

Gene Name

FGF21 fibroblast growth factor 21 [Homo sapiens (human)]

Official Symbol

FGF21

Synonyms

FGF21; fibroblast growth factor 21; FGF-21;

Gene ID

26291

mRNA Refseq

NM_019113

Protein Refseq

NP_061986

MIM

609436

UniProt ID

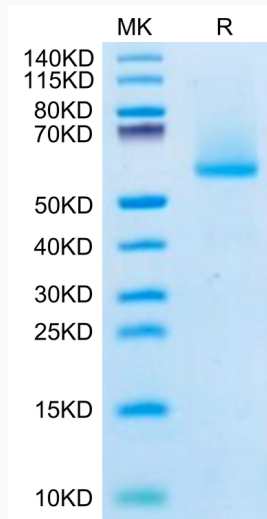
Q9NSA1

 Tel: 1-631-559-9269 1-516-512-3133

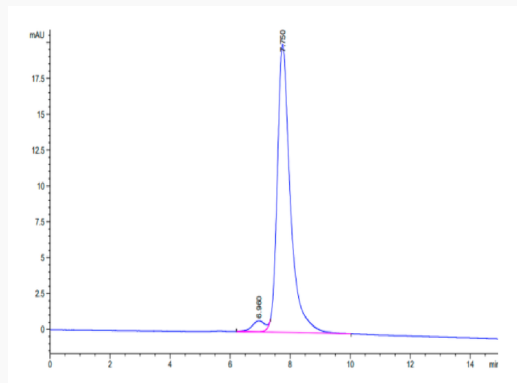
 Email: info@creative-biomart.com  Fax: 1-631-938-8127

 45-1 Ramsey Road, Shirley, NY 11967, USA

Biotinylated Human FGF21 on Tris-Bis PAGE under reduced condition. The purity is greater than 95%.



The purity of Biotinylated Human FGF21 is greater than 95% as determined by SEC-HPLC.



Immobilized Biotinylated Human FGF21, mFc Tag at 2 µg/mL (100 µL/Well) on the streptavidin precoated plate (5 µg/mL). Dose

 Tel: 1-631-559-9269 1-516-512-3133

 Email: info@creative-biomart.com  Fax: 1-631-938-8127

 45-1 Ramsey Road, Shirley, NY 11967, USA



response curve for
Human Beta Klotho,
His Tag with the
EC50 of 0.26 µg/mL
determined by
ELISA.

 Tel: 1-631-559-9269 1-516-512-3133

 Email: info@creative-biomart.com  Fax: 1-631-938-8127

 45-1 Ramsey Road, Shirley, NY 11967, USA