

Recombinant Human FGF21 protein, mFc-Avi-tagged, Biotinylated

Cat. No. FGF21-1567H **Lot. No.** (See product label)

SPECIFICATION

| | |
|--------------------------|---|
| Product Overview | Biotinylated Recombinant Human FGF21 protein(Q9NSA1)(His29-Ser209), fused with N-terminal mFc and Avi tag, was expressed in HEK293. |
| Species | Human |
| Source | HEK293 |
| ProteinLength | His29-Ser209 |
| Tag | N-mFc-Avi |
| Conjugation/Label | Biotin |
| Form | Lyophilized from 0.22µm filtered solution in PBS (pH 7.4). Normally 8% trehalose is added as protectant before lyophilization. |
| Bio-activity | Immobilized Biotinylated Human FGF21, mFc Tag at 5µg/ml (100µl/well) on the streptavidin precoated plate (5µg/ml). Dose response curve for Human Beta Klotho, His Tag with the EC50 of 0.71µg/ml determined by ELISA. |
| Molecular Mass | The protein has a predicted MW of 46.9 kDa. Due to glycosylation, the protein migrates to 55-65 kDa based on Tris-Bis PAGE result. |
| Endotoxin | Less than 1EU per µg by the LAL method. |

 Tel: 1-631-559-9269 1-516-512-3133

 Email: info@creative-biomart.com  Fax: 1-631-938-8127

 45-1 Ramsey Road, Shirley, NY 11967, USA

| | |
|-----------------------|---|
| Purity | > 95% as determined by Tris-Bis PAGE; > 95% as determined by HPLC. |
| Storage | Reconstituted protein stable at -80°C for 12 months, 4°C for 1 week. Use a manual defrost freezer and avoid repeated freeze-thaw cycles. |
| Reconstitution | Centrifuge tubes before opening. Reconstituting to a concentration more than 100 µg/ml is recommended. Dissolve the lyophilized protein in distilled water. |
| Conjugation | Biotin |

GENE INFORMATION

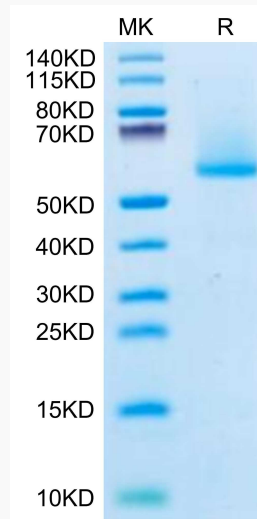
| | |
|------------------------|--|
| Gene Name | FGF21 fibroblast growth factor 21 [Homo sapiens] |
| Official Symbol | FGF21 |
| Synonyms | FGF21; fibroblast growth factor 21; FGF-21; |
| Gene ID | 26291 |
| mRNA Refseq | NM_019113 |
| Protein Refseq | NP_061986 |
| MIM | 609436 |
| UniProt ID | Q9NSA1 |

 Tel: 1-631-559-9269 1-516-512-3133

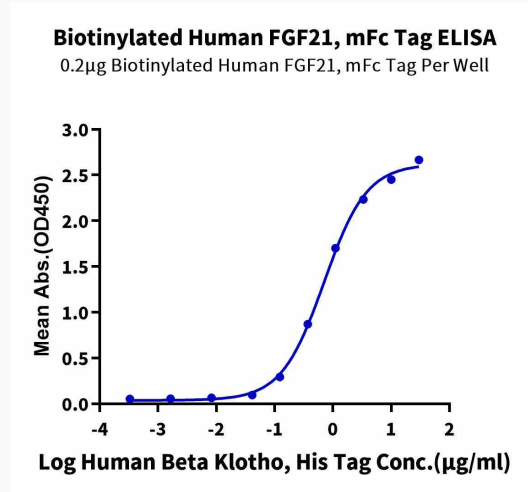
 Email: info@creative-biomart.com  Fax: 1-631-938-8127

 45-1 Ramsey Road, Shirley, NY 11967, USA

Tris-Bis PAGE



ELISA



Tel: 1-631-559-9269 1-516-512-3133

Email: info@creative-biomart.com Fax: 1-631-938-8127

45-1 Ramsey Road, Shirley, NY 11967, USA