

## Recombinant Human FGF7 protein, For Organoid Culture

Cat. No. FGF7-6333H Lot. No. (See product label)

### SPECIFICATION

<b>Product Overview</b>	Recombinant Human FGF7 protein(P21781)(Cys32-Thr194) is expressed in E. coli.
<b>Species</b>	Human
<b>Source</b>	E.coli
<b>ProteinLength</b>	Cys32-Thr194
<b>Tag</b>	Non
<b>Form</b>	Lyophilized from a 0.2 µm filtered solution of 20mM Tris, 1mM EDTA, 5% Trehalose, 0.02% Tween 80, pH 8.0.
<b>Bio-activity</b>	Human breast cancer organoids were cultured with Wnt3a, Noggin, R-spondin 3, KGF, FGF-10, EGF and NRG1-beta 1. The organoids showed good morphology.
<b>Molecular Mass</b>	18.9 KDa
<b>Endotoxin</b>	< 1 EU/µg as determined by LAL test.
<b>Purity</b>	Greater than 95% as determined by reducing SDS-PAGE.
<b>Storage</b>	Lyophilized protein should be stored at ≤ -20°C, stable for one year after receipt. Reconstituted protein solution can be stored at 2-8°C for 2-7 days. Aliquots of reconstituted samples are stable at ≤ -20°C for 3 months.

 Tel: 1-631-559-9269 1-516-512-3133

 Email: [info@creative-biomart.com](mailto:info@creative-biomart.com)  Fax: 1-631-938-8127

 45-1 Ramsey Road, Shirley, NY 11967, USA

**Reconstitution**

Always centrifuge tubes before opening. Do not mix by vortex or pipetting. It is not recommended to reconstitute to a concentration less than 100µg/ml. Dissolve the lyophilized protein in distilled water. Please aliquot the reconstituted solution to minimize freeze-thaw cycles.

**GENE INFORMATION**

**Gene Name** SUMO2 SMT3 suppressor of mif two 3 homolog 2 (*S. cerevisiae*) [ *Homo sapiens* ]

**Official Symbol** SUMO2

**Synonyms**

SUMO2; SMT3 suppressor of mif two 3 homolog 2 (*S. cerevisiae*); SMT3 (suppressor of mif two 3, yeast) homolog 2 , SMT3 suppressor of mif two 3 homolog 2 (yeast) , SMT3H2; small ubiquitin-related modifier 2; SMT3B; sentrin 2; SMT3 homolog 2; ubiquitin-like protein SMT3A; ubiquitin-like protein SMT3B; small ubiquitin-like modifier 2; HSMT3; SUMO3; Smt3A; SMT3H2; MGC117191;

**Gene ID** 6613

**mRNA Refseq** NM\_001005849

**Protein Refseq** NP\_001005849

**MIM** 603042

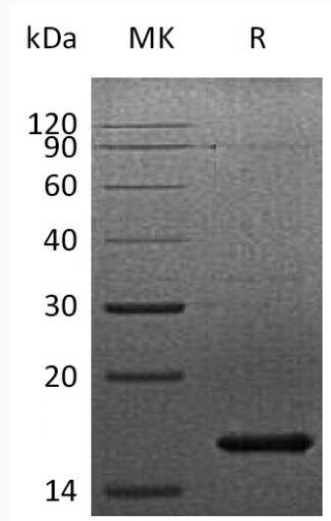
**UniProt ID** P61956

 Tel: 1-631-559-9269 1-516-512-3133

 Email: [info@creative-biomart.com](mailto:info@creative-biomart.com)  Fax: 1-631-938-8127

 45-1 Ramsey Road, Shirley, NY 11967, USA

**SDS-PAGE**



 Tel: 1-631-559-9269 1-516-512-3133

 Email: [info@creative-biomart.com](mailto:info@creative-biomart.com)  Fax: 1-631-938-8127

 45-1 Ramsey Road, Shirley, NY 11967, USA