

Recombinant Full Length Human FGFR1 Protein, C-Flag-tagged

Cat. No. FGFR1-1056HFL Lot. No. (See product label)

SPECIFICATION

Product Overview

Recombinant Full Length Human FGFR1 Protein, fused to Flag-tag at C-terminus, was expressed in Mammalian cells.

Species

Human

Source

Mammalian Cells

Description

The protein encoded by this gene is a member of the fibroblast growth factor receptor (FGFR) family, where amino acid sequence is highly conserved between members and throughout evolution. FGFR family members differ from one another in their ligand affinities and tissue distribution. A full-length representative protein consists of an extracellular region, composed of three immunoglobulin-like domains, a single hydrophobic membrane-spanning segment and a cytoplasmic tyrosine kinase domain. The extracellular portion of the protein interacts with fibroblast growth factors, setting in motion a cascade of downstream signals, ultimately influencing mitogenesis and differentiation. This particular family member binds both acidic and basic fibroblast growth factors and is involved in limb induction. Mutations in this gene have been associated with Pfeiffer syndrome, Jackson-Weiss syndrome, Antley-Bixler syndrome, osteoglophonic dysplasia, and autosomal dominant Kallmann syndrome 2. Chromosomal aberrations involving this gene are associated with stem cell myeloproliferative disorder and stem cell leukemia lymphoma syndrome. Alternatively spliced variants which encode different protein isoforms have been described; however, not all variants have been fully characterized.

 Tel: 1-631-559-9269 1-516-512-3133

 Email: info@creative-biomart.com  Fax: 1-631-938-8127

 45-1 Ramsey Road, Shirley, NY 11967, USA

| | |
|-----------------------|---|
| Form | 25 mM Tris HCl, pH 7.3, 100 mM glycine, 10% glycerol. |
| Molecular Mass | 89.4 kDa |
| AA Sequence | <p>MWSWKCLLFWAVLVTATLCTARPSPTLPEQAQPWGAPVEVESFLVHPGDLLQLRC RLRDDVQSINWLRDG VQLAESNRTRITGEEVEVQDSVPADSGLYACVTSSPSGSDT TYFSVNVSDALPSEDDDDDDSSSEEKE TDNTKPNRMPVAPYWTSPEKMEKKLH AVPAAKTVKFKCPSSGTPNPTLRWLKNGKEFKPDHRIGGYKVRY ATWSIIMDSVVP SDKGNYTCIVENEYGSINHTYQLDVVERSHPRPILQAGLPANKTVALGSNVEFMCKV Y SDPQPHIQWLKHIEVNGSKIGPDNLPYVQILKTAGVNTTDKEMEVLHLRNVSFEDA GEYTCLAGNSIGLS HHSAWLTVLEALEERPAVMTSPLYLEIIIIYCTGAFLISCMVGSVI VYKMKSGTKKSDFHSMVAVHKLAKS IPLRRQVTVSADSSASMNSGVLLVRPSRLSS SGTPMLAGVSEYELPEDPRWELPRDRLVLGKPLGEGCFG QVVLAEAIGLDKDKPN RVTKVAVKMLKSDATEKDLSDLISEMEMMKMIGKHKNIINLLGACTQDGPLYVI VEYA SKGNLREYLQARRPPGLECYNPSHNPPEQLSSKDLVSCAYQVARGMEYLASKKCI HRDLAARNVL VTEDNVMKIADFLGARDIHHIDYYKTTNGRLPVKWMapeALFDRIY THQSDVWSFGVLLWEIFTLGGSP YPGVPVEELFKLLKEGHRMDKPSNCTNELYMM MRDCWHAVPSQRPTFKQLVEDLDRIVALTSNQEYLDLS MPLDQYSPSPDTRSSTCSSGEDSVFSHEPLPEEPCLPRHPAQLANGGLKRTRTRTR PLEQKLISEEDLAANDILDYKDDDDKV</p> |
| Purity | > 80% as determined by SDS-PAGE and Coomassie blue staining. |
| Stability | Stable for 12 months from the date of receipt of the product under proper storage and handling conditions. Avoid repeated freeze-thaw cycles. |
| Storage | Store at -80 centigrade. |
| Concentration | >50 ug/mL as determined by microplate BCA method. |

 Tel: 1-631-559-9269 1-516-512-3133

 Email: info@creative-biomart.com  Fax: 1-631-938-8127

 45-1 Ramsey Road, Shirley, NY 11967, USA

| | |
|-------------------------|--|
| Preparation | Recombinant protein was captured through anti-DDK affinity column followed by conventional chromatography steps. |
| Protein Families | Druggable Genome, Protein Kinase, Transmembrane |
| Protein Pathways | Adherens junction, MAPK signaling pathway, Melanoma, Pathways in cancer, Prostate cancer, Regulation of actin cytoskeleton |
| Full Length | Full L. |

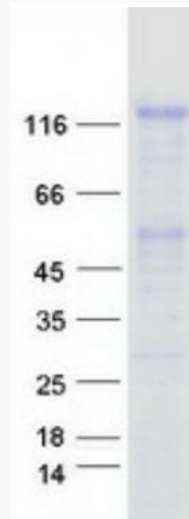
GENE INFORMATION

| | |
|------------------------|--|
| Gene Name | FGFR1 fibroblast growth factor receptor 1 [Homo sapiens (human)] |
| Official Symbol | FGFR1 |
| Synonyms | CEK; FLG; HH2; OGD; ECCL; FLT2; KAL2; BFGFR; CD331; FGFBR; FLT-2; HBGFR; N-SAM; FGFR-1; HRTFDS; bFGF-R-1 |
| Gene ID | 2260 |
| mRNA Refseq | NM_023110.3 |
| Protein Refseq | NP_075598.2 |
| MIM | 136350 |
| UniProt ID | P11362 |

 Tel: 1-631-559-9269 1-516-512-3133

 Email: info@creative-biomart.com  Fax: 1-631-938-8127

 45-1 Ramsey Road, Shirley, NY 11967, USA



Coomassie blue staining of purified FGFR1 protein.

 Tel: 1-631-559-9269 1-516-512-3133

 Email: info@creative-biomart.com  Fax: 1-631-938-8127

 45-1 Ramsey Road, Shirley, NY 11967, USA