

Recombinant Human FGFR1 protein, His-Avi-tagged

Cat. No. FGFR1-362H Lot. No. (See product label)

SPECIFICATION

Product Overview	Recombinant Human FGFR1 protein(P11362-7)(Arg22-Glu374(IIIc)), fused with C-terminal His and Avi tag, was expressed in HEK293.
Species	Human
Source	HEK293
ProteinLength	Arg22-Glu374(IIIc)
Tag	C-His-Avi
Form	Lyophilized from 0.22µm filtered solution in PBS (pH 7.4). Normally 5% trehalose is added as protectant before lyophilization.
Bio-activity	Immobilized Human FGFR1 alpha (IIIc) at 0.5µg/ml (100µl/Well) on the plate. Dose response curve for Anti-FGFR1 Antibody, hFc Tag with the EC50 of 4.6ng/ml determined by ELISA.
Molecular Mass	The protein has a predicted MW of 42 kDa. Due to glycosylation, the protein migrates to 68-83 kDa based on Tris-Bis PAGE result.
Endotoxin	Less than 1EU per µg by the LAL method.
Purity	> 95% as determined by Tris-Bis PAGE; > 95% as determined by HPLC

 Tel: 1-631-559-9269 1-516-512-3133

 Email: info@creative-biomart.com  Fax: 1-631-938-8127

 45-1 Ramsey Road, Shirley, NY 11967, USA

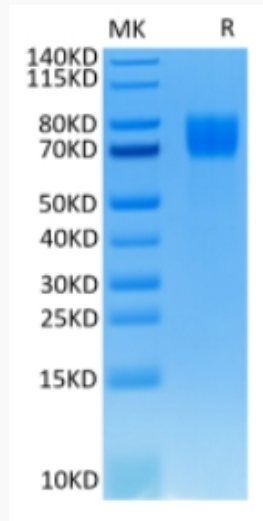
Storage	Reconstituted protein stable at -80°C for 12 months, 4°C for 1 week. Use a manual defrost freezer and avoid repeated freeze-thaw cycles.
Reconstitution	Centrifuge tubes before opening. Reconstituting to a concentration more than 100 µg/ml is recommended. Dissolve the lyophilized protein in distilled water.
GENE INFORMATION	
Gene Name	FGFR1 fibroblast growth factor receptor 1 [Homo sapiens]
Official Symbol	FGFR1
Synonyms	FGFR1; fibroblast growth factor receptor 1; FLT2, fms related tyrosine kinase 2 , KAL2; BFGFR; CD331; CEK; FLG; H2; H3; H4; H5; N SAM; Pfeiffer syndrome; FGFR1/PLAG1 fusion; proto-oncogene c-Fgr; FMS-like tyrosine kinase 2; hydroxyaryl-protein kinase; fms-related tyrosine kinase 2; heparin-binding growth factor receptor; basic fibroblast growth factor receptor 1; OGD; FLT2; KAL2; FGFBR; FLT-2; HBGFR; N-SAM; FGFR-1; bFGF-R-1; FLJ99988;
Gene ID	2260
mRNA Refseq	NM_001174063
Protein Refseq	NP_001167534
MIM	136350
UniProt ID	P11362

 Tel: 1-631-559-9269 1-516-512-3133

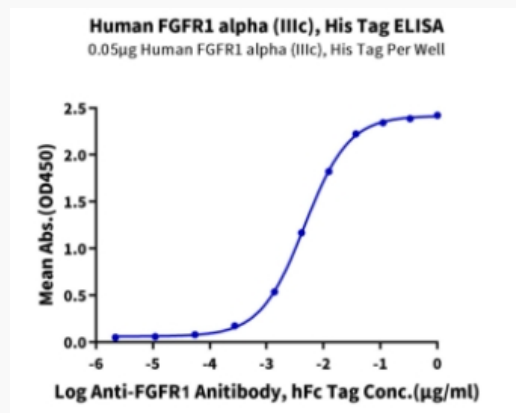
 Email: info@creative-biomart.com  Fax: 1-631-938-8127

 45-1 Ramsey Road, Shirley, NY 11967, USA

Tris-Bis PAGE



ELISA Data



Tel: 1-631-559-9269 1-516-512-3133

Email: info@creative-biomart.com Fax: 1-631-938-8127

45-1 Ramsey Road, Shirley, NY 11967, USA