

Recombinant Human FGFR1 Protein (Met1-Glu285), C-His tagged

Cat. No. FGFR1-4112H Lot. No. (See product label)

SPECIFICATION

Product Overview	Recombinant human FGFR1 (Met1-Glu285) fused with the C-terminal His tag was expressed in Mammalian cells.
Species	Human
Source	Mammalian Cells
ProteinLength	Met1-Glu285
Form	Lyophilized powder/frozen liquid
Molecular Mass	31.35 kDa
Endotoxin	< 1.0 EU/μg of the protein as determined by the LAL method.
Purity	>90% as determined by SDS-PAGE.
Notes	For research use only.
Storage	Use a manual defrost freezer and avoid repeated freeze thaw cycles. Store at 2 to 8 centigrade for one week. Store at -20 to -80 centigrade for twelve months from the date of receipt.
Storage Buffer	Supplied as solution form in PBS, pH 7.5 or lyophilized from PBS, pH 7.5.

 Tel: 1-631-559-9269 1-516-512-3133

 Email: info@creative-biomart.com  Fax: 1-631-938-8127

 45-1 Ramsey Road, Shirley, NY 11967, USA

Reconstitution Reconstitute in sterile water for a stock solution.

Shipping They are shipped out with dry ice/blue ice unless customers require otherwise.

GENE INFORMATION

Gene Name [FGFR1 fibroblast growth factor receptor 1 \[Homo sapiens \(human\) \]](#)

Official Symbol [FGFR1](#)

Synonyms

FGFR1; fibroblast growth factor receptor 1; FLT2, fms related tyrosine kinase 2, KAL2; BFGFR; CD331; CEK; FLG; H2; H3; H4; H5; N SAM; Pfeiffer syndrome; FGFR1/PLAG1 fusion; proto-oncogene c-Fgr; FMS-like tyrosine kinase 2; hydroxyaryl-protein kinase; fms-related tyrosine kinase 2; heparin-binding growth factor receptor; basic fibroblast growth factor receptor 1; OGD; FLT2; KAL2; FGFBR; FLT-2; HBGFR; N-SAM; FGFR-1; bFGF-R-1; FLJ99988;

Gene ID [2260](#)

mRNA Refseq [NM_001174063](#)

Protein Refseq [NP_001167534](#)

MIM [136350](#)

UniProt ID [P11362](#)

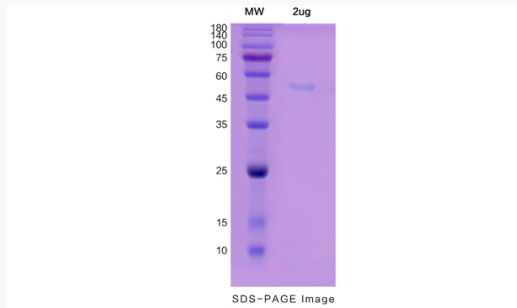
 Tel: 1-631-559-9269 1-516-512-3133

 Email: info@creative-biomart.com  Fax: 1-631-938-8127

 45-1 Ramsey Road, Shirley, NY 11967, USA



SDS-PAGE



Tel: 1-631-559-9269 1-516-512-3133

Email: info@creative-biomart.com Fax: 1-631-938-8127

45-1 Ramsey Road, Shirley, NY 11967, USA