

Recombinant Human FGFR1 protein, His-sumostar-tagged

Cat. No. FGFR1-5404H Lot. No. (See product label)

SPECIFICATION

Product Overview	Recombinant Human FGFR1 protein(P11362)(22-376aa), fused to N-terminal His and SUMOstar tag, was expressed in Yeast.
Species	Human
Source	Yeast
ProteinLength	22-376aa
Form	If the delivery form is liquid, the default storage buffer is Tris/PBS-based buffer, 5%-50% glycerol. If the delivery form is lyophilized powder, the buffer before lyophilization is Tris/PBS-based buffer, 6% Trehalose, pH 8.0.
Molecular Mass	55.4 kDa
Purity	Greater than 85% as determined by SDS-PAGE.
Storage	Store at -20°C/-80°C upon receipt, aliquoting is necessary for mutiple use. Avoid repeated freeze-thaw cycles.
Reconstitution	Please reconstitute protein in deionized sterile water to a concentration of 0.1-1.0 mg/mL. We recommend to add 5-50% of glycerol (final concentration) and aliquot for long-term storage at -20°C/-80°C. Our default final concentration of glycerol is 50%.

GENE INFORMATION

 Tel: 1-631-559-9269 1-516-512-3133

 Email: info@creative-biomart.com  Fax: 1-631-938-8127

 45-1 Ramsey Road, Shirley, NY 11967, USA

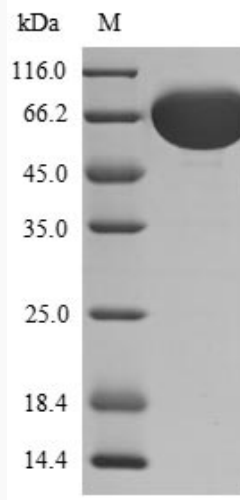
Gene Name	FGFR1 fibroblast growth factor receptor 1 [Homo sapiens]
Official Symbol	FGFR1
Synonyms	FGFR1; fibroblast growth factor receptor 1; FLT2, fms related tyrosine kinase 2 , KAL2; BFGFR; CD331; CEK; FLG; H2; H3; H4; H5; N SAM; Pfeiffer syndrome; FGFR1/PLAG1 fusion; proto-oncogene c-Fgr; FMS-like tyrosine kinase 2; hydroxyaryl-protein kinase; fms-related tyrosine kinase 2; heparin-binding growth factor receptor; basic fibroblast growth factor receptor 1; OGD; FLT2; KAL2; FGFBR; FLT-2; HBGFR; N-SAM; FGFR-1; bFGF-R-1; FLJ99988;
Gene ID	2260
mRNA Refseq	NM_001174063
Protein Refseq	NP_001167534
MIM	136350
UniProt ID	P11362

 Tel: 1-631-559-9269 1-516-512-3133

 Email: info@creative-biomart.com  Fax: 1-631-938-8127

 45-1 Ramsey Road, Shirley, NY 11967, USA

SDS-PAGE



 Tel: 1-631-559-9269 1-516-512-3133

 Email: info@creative-biomart.com  Fax: 1-631-938-8127

 45-1 Ramsey Road, Shirley, NY 11967, USA