

Recombinant Human FGFR1OP Protein, GST-tagged

Cat. No. FGFR1OP-4125H Lot. No. (See product label)

SPECIFICATION

Product Overview	Human FGFR1OP full-length ORF (AAH11902, 1 a.a. - 379 a.a.) recombinant protein with GST-tag at N-terminal.
Species	Human
Source	Wheat Germ
Description	<p>This gene encodes a largely hydrophilic protein postulated to be a leucine-rich protein family member. A t(6;8)(q27;p11) chromosomal translocation, fusing this gene and the fibroblast growth factor receptor 1 (FGFR1) gene, has been found in cases of myeloproliferative disorder. The resulting chimeric protein contains the N-terminal leucine-rich region of this encoded protein fused to the catalytic domain of FGFR1. This gene is thought to play an important role in normal proliferation and differentiation of the erythroid lineage. Alternatively spliced transcript variants that encode different proteins have been identified. [provided by RefSeq]</p>
Molecular Mass	67.43 kDa
AA Sequence	<p>MAATAAAVVAEEDTELRLDLLVQTLNSGVLNRIKAE LRAAVFLALEEQEKVENKTPLV NESLRKFLNTKDGRLVASLVAEFLQFFNLDFTLAVFQPETSTLQGLEGRENLARDLGI IEAEGTVGGPLLLLEVIRRCQQKEKGPTTGEGALDLSVDVHSPPKSPEGKTSQAQTPSK KANDEANQSDTSVSLSEPKSKSSLHLLSHETKIGSFLSNRTL DKGDKAGLCPDEDDM EGDSFFDDPIPKPEKTYGLRNEPRKQAGSLASLSDAPPLKSGLSLAGAPSLKDSSES KRGNTVLKDLKLISDKIGSLGLGTGEDDDYVDDFNSTSHRSEKSEISIGEEIEEDLSVE</p>

 Tel: 1-631-559-9269 1-516-512-3133

 Email: info@creative-biomart.com  Fax: 1-631-938-8127

 45-1 Ramsey Road, Shirley, NY 11967, USA

IDDINTSDKLDDLTQDLTVSQLSDVADYLEDVA

Applications

Enzyme-linked Immunoabsorbent Assay
 Western Blot (Recombinant protein)
 Antibody Production
 Protein Array

Notes

Best use within three months from the date of receipt of this protein.

Storage

Store at -80 centigrade. Aliquot to avoid repeated freezing and thawing.

Storage Buffer

50 mM Tris-HCl, 10 mM reduced Glutathione, pH=8.0 in the elution buffer.

GENE INFORMATION

Gene Name

[FGFR1OP](#) [FGFR1 oncogene partner \[Homo sapiens \]](#)

Official Symbol

[FGFR1OP](#)

Synonyms

[FGFR1OP](#); [FGFR1 oncogene partner](#); [FOP](#); [fibroblast growth factor receptor 1 oncogene partner](#);

Gene ID

[11116](#)

mRNA Refseq

[NM_007045](#)

Protein Refseq

[NP_008976](#)

MIM

[605392](#)

UniProt ID

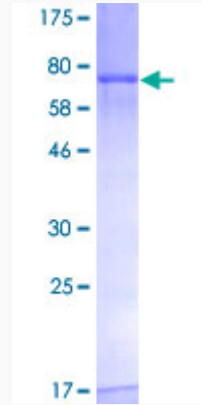
[O95684](#)

 Tel: 1-631-559-9269 1-516-512-3133

 Email: info@creative-biomart.com  Fax: 1-631-938-8127

 45-1 Ramsey Road, Shirley, NY 11967, USA

**Quality Control
Testing**



12.5% SDS-PAGE Stained with Coomassie Blue.

 Tel: 1-631-559-9269 1-516-512-3133

 Email: info@creative-biomart.com  Fax: 1-631-938-8127

 45-1 Ramsey Road, Shirley, NY 11967, USA