

Recombinant Human FGFR2 protein, His-Avi-tagged, Biotinylated

Cat. No. FGFR2-050HB **Lot. No.** (See product label)

SPECIFICATION

Product Overview	Biotinylated Recombinant Human FGFR2 protein(P21802-3)(Arg22-Glu378), fused with C-terminal His and Avi tag, was expressed in HEK293.
Species	Human
Source	HEK293
ProteinLength	Arg22-Glu378
Tag	C-His-Avi
Conjugation/Label	Biotin
Form	Lyophilized from 0.22µm filtered solution in PBS (pH 7.4). Normally 5% trehalose is added as protectant before lyophilization.
Bio-activity	Immobilized Anti-FGFR2 alpha (IIIb) Antibody, hFc Tag at 2ug/ml (100ul/well) on the plate. Dose response curve for Biotinylated Human FGFR2 alpha (IIIb) , His Tag with the EC50 of 20.3ng/ml determined by ELISA.
Molecular Mass	The protein has a predicted MW of 42.5 kDa. Due to glycosylation, the protein migrates to 70-110 kDa based on Tris-Bis PAGE result.
Endotoxin	Less than 1EU per µg by the LAL method.

 Tel: 1-631-559-9269 1-516-512-3133

 Email: info@creative-biomart.com  Fax: 1-631-938-8127

 45-1 Ramsey Road, Shirley, NY 11967, USA

Purity	> 95% as determined by Tris-Bis PAGE;> 95% as determined by HPLC
Storage	Reconstituted protein stable at -80°C for 12 months, 4°C for 1 week. Use a manual defrost freezer and avoid repeated freeze-thaw cycles.
Reconstitution	Centrifuge tubes before opening. Reconstituting to a concentration more than 100 µg/ml is recommended. Dissolve the lyophilized protein in distilled water.
Conjugation	Biotin

GENE INFORMATION

Gene Name	FGFR2 fibroblast growth factor receptor 2 [Homo sapiens]
Official Symbol	FGFR2
Synonyms	FGFR2; fibroblast growth factor receptor 2; bacteria expressed kinase , BEK, CFD1, craniofacial dysostosis 1 , Jackson Weiss syndrome , JWS, keratinocyte growth factor receptor , KGFR; CD332; CEK3; Crouzon syndrome; ECT1; K SAM; Pfeiffer syndrome; TK14; TK25; FGFR-2; FGF receptor; soluble FGFR4 variant 4; bacteria-expressed kinase; hydroxyaryl-protein kinase; keratinocyte growth factor receptor; BEK fibroblast growth factor receptor; protein tyrosine kinase, receptor like 14; BEK; JWS; CFD1; KGFR; BFR-1; K-SAM; FLJ98662;
Gene ID	2263
mRNA Refseq	NM_000141
Protein Refseq	NP_000132
MIM	176943

 Tel: 1-631-559-9269 1-516-512-3133

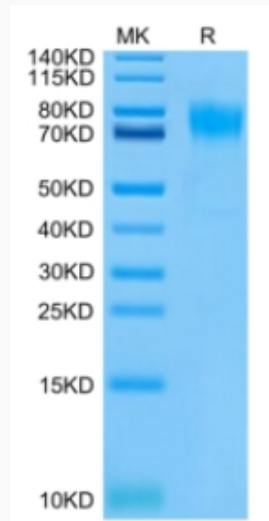
 Email: info@creative-biomart.com  Fax: 1-631-938-8127

 45-1 Ramsey Road, Shirley, NY 11967, USA

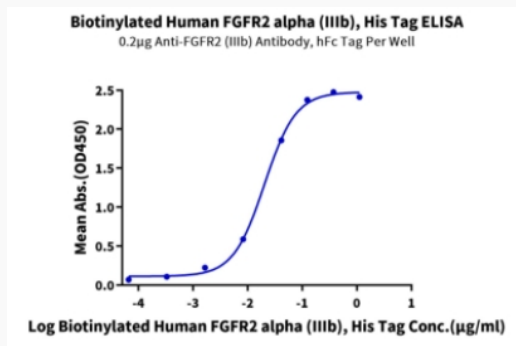
UniProt ID

P21802

Tris-Bis PAGE



ELISA Data



 Tel: 1-631-559-9269 1-516-512-3133

 Email: info@creative-biomart.com  Fax: 1-631-938-8127

 45-1 Ramsey Road, Shirley, NY 11967, USA