

Recombinant Human FGFR2 protein(IIIb), His-Avi-tagged

Cat. No. FGFR2-056H Lot. No. (See product label)

SPECIFICATION

Product Overview	Human FGFR2 beta (IIIb) Protein is expressed from mammalian with a His tag and Avi Tag at the C-terminal. It contains Arg22 - Glu289.
Species	Human
Source	HEK293
ProteinLength	It contains Arg22 - Glu289.
Description	Four distinct genes encoding closely related FGF receptors, FGF R1 - 4, are known. All four genes for FGF Rs encode proteins with an N-terminal signal peptide, three immunoglobulin (Ig)-like domains, an acid-box region containing a run of acidic residues between the IgI and IgII domains, a transmembrane domain and the split tyrosine-kinase domain. Multiple forms of FGF R1 - 3 are generated by alternative splicing of the mRNAs. A frequent splicing event involving FGF R1 and 2 results in receptors containing all three Ig domains, referred to as the alpha isoform, or only IgII and IgIII, referred to as the beta isoform.
Form	Supplied as 0.22um filtered solution in 20mM PBS, pH7.4.
Molecular Mass	The protein has a predicted MW of 32.7 kDa. Due to glycosylation, the protein migrates to 50-70 kDa based on Bis-Tris PAGE result.
Endotoxin	Less than 0.05 EU per ug by the LAL method.

 Tel: 1-631-559-9269 1-516-512-3133

 Email: info@creative-biomart.com  Fax: 1-631-938-8127

 45-1 Ramsey Road, Shirley, NY 11967, USA

Purity	> 95% as determined by Tris-Bis PAGE; > 95% as determined by HPLC
Storage	The product should be stored at -70°C. Please do not repeated freeze-thaw cycles.
Reconstitution	It is recommended that sterile water be added to the vial to prepare a stock solution of 0.2 ug/ul. Centrifuge the vial at 4°C before opening to recover the entire contents.

GENE INFORMATION

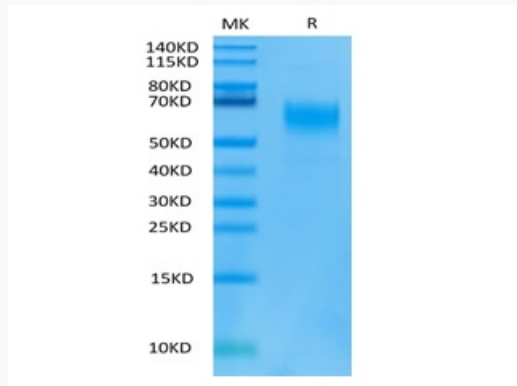
Gene Name	FGFR2 fibroblast growth factor receptor 2 [Homo sapiens]
Official Symbol	FGFR2
Synonyms	FGF R2b; FGFR2 beta;KGFR;CD332;Keratinocyte growth factor receptor
Gene ID	2263
mRNA Refseq	NM_000141
Protein Refseq	NP_000132
MIM	176943
UniProt ID	P21802

 Tel: 1-631-559-9269 1-516-512-3133

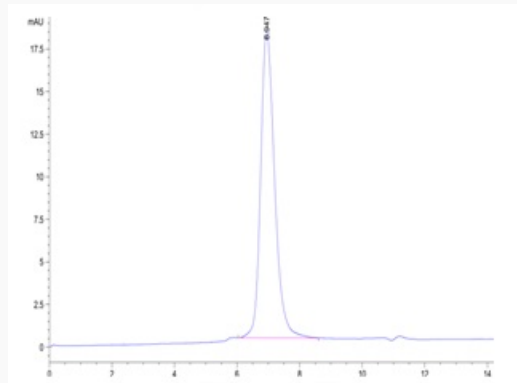
 Email: info@creative-biomart.com  Fax: 1-631-938-8127

 45-1 Ramsey Road, Shirley, NY 11967, USA

Tris-Bis PAGE



HPLC data



 Tel: 1-631-559-9269 1-516-512-3133

 Email: info@creative-biomart.com  Fax: 1-631-938-8127

 45-1 Ramsey Road, Shirley, NY 11967, USA