

Recombinant Human FGFR2 Protein (Arg22-Glu377), N-His tagged

Cat. No. FGFR2-1230H Lot. No. (See product label)

SPECIFICATION

Product Overview	Recombinant Human CD332/FGFR2 (Arg22-Glu377) fused with the N-His tag was expressed in E. coli.
Species	Human
Source	E.coli
ProteinLength	Arg22-Glu377
Form	Lyophilized powder/frozen liquid
Molecular Mass	41.84 kDa
Purity	>90% as determined by SDS-PAGE.
Notes	For research use only.
Storage	Use a manual defrost freezer and avoid repeated freeze thaw cycles. Store at 2 to 8 centigrade for one week. Store at -20 to -80 centigrade for twelve months from the date of receipt.
Storage Buffer	0.01M PBS, pH 7.4, 0.02% NLS
Reconstitution	Reconstitute in sterile water for a stock solution.

 Tel: 1-631-559-9269 1-516-512-3133

 Email: info@creative-biomart.com  Fax: 1-631-938-8127

 45-1 Ramsey Road, Shirley, NY 11967, USA

Shipping They are shipped out with dry ice/blue ice unless customers require otherwise.

GENE INFORMATION

Gene Name [FGFR2 fibroblast growth factor receptor 2 \[Homo sapiens \(human\) \]](#)

Official Symbol [FGFR2](#)

Synonyms

FGFR2; fibroblast growth factor receptor 2; bacteria expressed kinase, BEK, CFD1, craniofacial dysostosis 1, Jackson Weiss syndrome, JWS, keratinocyte growth factor receptor, KGFR; CD332; CEK3; Crouzon syndrome; ECT1; K SAM; Pfeiffer syndrome; TK14; TK25; FGFR-2; FGF receptor; soluble FGFR4 variant 4; bacteria-expressed kinase; hydroxyaryl-protein kinase; keratinocyte growth factor receptor; BEK fibroblast growth factor receptor; protein tyrosine kinase, receptor like 14; BEK; JWS; CFD1; KGFR; BFR-1; K-SAM; FLJ98662;

Gene ID [2263](#)

mRNA Refseq [NM_000141](#)

Protein Refseq [NP_000132](#)

MIM [176943](#)

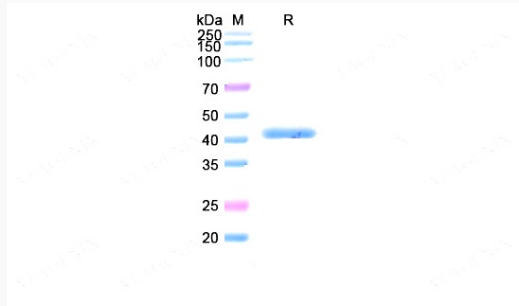
UniProt ID [P21802](#)

 Tel: 1-631-559-9269 1-516-512-3133

 Email: info@creative-biomart.com  Fax: 1-631-938-8127

 45-1 Ramsey Road, Shirley, NY 11967, USA

SDS-PAGE



 Tel: 1-631-559-9269 1-516-512-3133

 Email: info@creative-biomart.com  Fax: 1-631-938-8127

 45-1 Ramsey Road, Shirley, NY 11967, USA