

## Recombinant Human FGFR2 protein, His-tagged

Cat. No. FGFR2-2457H Lot. No. (See product label)

### SPECIFICATION

<b>Product Overview</b>	Recombinant Human FGFR2 protein(P21802-1)(Arg152-Glu377(IIIc)), fused with C-terminal His tag, was expressed in HEK293.
<b>Species</b>	Human
<b>Source</b>	HEK293
<b>ProteinLength</b>	Arg152-Glu377(IIIc)
<b>Tag</b>	C-His
<b>Form</b>	Lyophilized from 0.22µm filtered solution in PBS (pH 7.4). Normally 5% trehalose is added as protectant before lyophilization.
<b>Bio-activity</b>	Immobilized Human FGF basic, No Tag at 5µg/ml (100µl/well) on the plate. Dose response curve for Human FGFR2 beta (IIIc), His Tag with the EC50 of 1.18µg/ml determined by ELISA.
<b>Molecular Mass</b>	The protein has a predicted MW of 26.4 kDa. Due to glycosylation, the protein migrates to 45-60 kDa based on Tris-Bis PAGE result.
<b>Endotoxin</b>	Less than 1EU per µg by the LAL method.
<b>Purity</b>	> 95% as determined by Tris-Bis PAGE; > 95% as determined by HPLC

 Tel: 1-631-559-9269 1-516-512-3133

 Email: [info@creative-biomart.com](mailto:info@creative-biomart.com)  Fax: 1-631-938-8127

 45-1 Ramsey Road, Shirley, NY 11967, USA

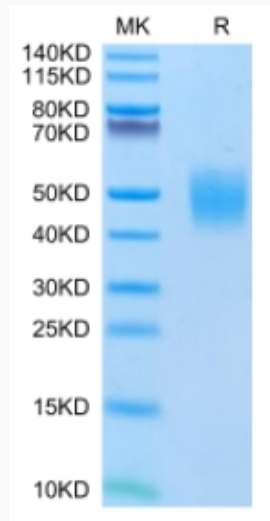
<b>Storage</b>	Reconstituted protein stable at -80°C for 12 months, 4°C for 1 week. Use a manual defrost freezer and avoid repeated freeze-thaw cycles.
<b>Reconstitution</b>	Centrifuge tubes before opening. Reconstituting to a concentration more than 100 µg/ml is recommended. Dissolve the lyophilized protein in distilled water.
<b>GENE INFORMATION</b>	
<b>Gene Name</b>	<a href="#">FGFR2 fibroblast growth factor receptor 2 [ Homo sapiens ]</a>
<b>Official Symbol</b>	<a href="#">FGFR2</a>
<b>Synonyms</b>	FGFR2; fibroblast growth factor receptor 2; bacteria expressed kinase , BEK, CFD1, craniofacial dysostosis 1 , Jackson Weiss syndrome , JWS, keratinocyte growth factor receptor , KGFR; CD332; CEK3; Crouzon syndrome; ECT1; K SAM; Pfeiffer syndrome; TK14; TK25; FGFR-2; FGF receptor; soluble FGFR4 variant 4; bacteria-expressed kinase; hydroxyaryl-protein kinase; keratinocyte growth factor receptor; BEK fibroblast growth factor receptor; protein tyrosine kinase, receptor like 14; BEK; JWS; CFD1; KGFR; BFR-1; K-SAM; FLJ98662;
<b>Gene ID</b>	<a href="#">2263</a>
<b>mRNA Refseq</b>	<a href="#">NM_000141</a>
<b>Protein Refseq</b>	<a href="#">NP_000132</a>
<b>MIM</b>	<a href="#">176943</a>
<b>UniProt ID</b>	<a href="#">P21802</a>

 Tel: 1-631-559-9269 1-516-512-3133

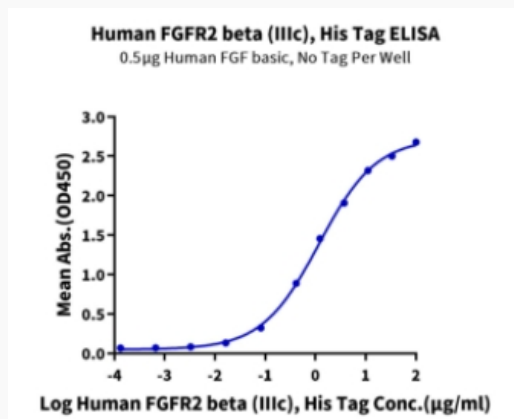
 Email: [info@creative-biomart.com](mailto:info@creative-biomart.com)  Fax: 1-631-938-8127

 45-1 Ramsey Road, Shirley, NY 11967, USA

**Tris-Bis PAGE**



**ELISA Data**



 Tel: 1-631-559-9269 1-516-512-3133

 Email: [info@creative-biomart.com](mailto:info@creative-biomart.com)  Fax: 1-631-938-8127

 45-1 Ramsey Road, Shirley, NY 11967, USA