

Active Recombinant Human FGFR2 protein

Cat. No. FGFR2-2593H **Lot. No.** (See product label)

SPECIFICATION

Product Overview	Active Recombinant Human FGFR-2/KGFR/CD332 Protein is produced by insect cell-baculovirus expression system. The target protein is expressed with sequence (Pro458-Gln778) of human FGFR-2 (Accession #NP_000132.3).
Species	Human
Source	Sf9 Cells
ProteinLength	Pro458-Gln778
Form	Lyophilized from a 0.22 µm filtered solution of PBS, pH 7.4.
Bio-activity	<p>1. Measured by its ability to inhibit FGF-acidic dependent proliferation of Balb/c 3T3 mouse fibroblasts. The ED50 for this effect is typically 0.21-0.84 ng/mL.</p> <p>2. Measured by its binding ability in a functional ELISA. Immobilized Recombinant Human FGFR2 at 2 µg/mL (100 µL/well) can bind Recombinant Human FGF1 with a linear range of 0.128-48.3 ng/mL.</p>
Molecular Mass	35 kDa
Endotoxin	< 1.0 EU/µg of the protein by LAL method.
Purity	> 97% by SDS-PAGE.
Storage	Store the lyophilized protein at -20°C to -80 °C for long term.

 Tel: 1-631-559-9269 1-516-512-3133

 Email: info@creative-biomart.com  Fax: 1-631-938-8127

 45-1 Ramsey Road, Shirley, NY 11967, USA

After reconstitution, the protein solution is stable at -20 °C for 3 months, at 2-8 °C for up to 1 week.

Reconstitution Reconstitute to a concentration of 0.1-0.5 mg/mL in sterile distilled water.

GENE INFORMATION

Gene Name [FGFR2 fibroblast growth factor receptor 2 \[Homo sapiens \]](#)

Official Symbol [FGFR2](#)

Synonyms

FGFR2; fibroblast growth factor receptor 2; bacteria expressed kinase , BEK, CFD1, craniofacial dysostosis 1 , Jackson Weiss syndrome , JWS, keratinocyte growth factor receptor , KGFR; CD332; CEK3; Crouzon syndrome; ECT1; K SAM; Pfeiffer syndrome; TK14; TK25; FGFR-2; FGF receptor; soluble FGFR4 variant 4; bacteria-expressed kinase; hydroxyaryl-protein kinase; keratinocyte growth factor receptor; BEK fibroblast growth factor receptor; protein tyrosine kinase, receptor like 14; BEK; JWS; CFD1; KGFR; BFR-1; K-SAM; FLJ98662;

Gene ID [2263](#)

mRNA Refseq [NM_000141](#)

Protein Refseq [NP_000132](#)

MIM [176943](#)

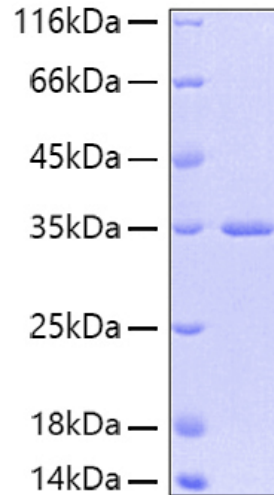
UniProt ID [P21802](#)

 Tel: 1-631-559-9269 1-516-512-3133

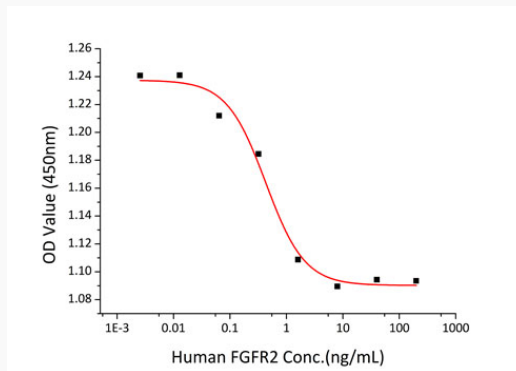
 Email: info@creative-biomart.com  Fax: 1-631-938-8127

 45-1 Ramsey Road, Shirley, NY 11967, USA

SDS-PAGE



Bio-activity



 Tel: 1-631-559-9269 1-516-512-3133

 Email: info@creative-biomart.com  Fax: 1-631-938-8127

 45-1 Ramsey Road, Shirley, NY 11967, USA