

## Recombinant Human FGFR2 protein, His-tagged

Cat. No. FGFR2-4117H Lot. No. (See product label)

### SPECIFICATION

<b>Product Overview</b>	Recombinant Human FGFR2 protein(P21802-1)(Arg22-Glu377(IIIc)), fused with C-terminal His tag, was expressed in HEK293.
<b>Species</b>	Human
<b>Source</b>	HEK293
<b>ProteinLength</b>	Arg22-Glu377(IIIc)
<b>Tag</b>	C-His
<b>Form</b>	Lyophilized from 0.22µm filtered solution in PBS (pH 7.4). Normally 5% trehalose is added as protectant before lyophilization.
<b>Molecular Mass</b>	The protein has a predicted MW of 40.6 kDa. Due to glycosylation, the protein migrates to 60-70 kDa based on Tris-Bis PAGE result.
<b>Endotoxin</b>	Less than 1EU per µg by the LAL method.
<b>Purity</b>	> 95% as determined by Tris-Bis PAGE; > 95% as determined by HPLC
<b>Storage</b>	Reconstituted protein stable at -80°C for 12 months, 4°C for 1 week. Use a manual defrost freezer and avoid repeated freeze-thaw cycles.
<b>Reconstitution</b>	Centrifuge tubes before opening. Reconstituting to a concentration more than 100

 Tel: 1-631-559-9269 1-516-512-3133

 Email: [info@creative-biomart.com](mailto:info@creative-biomart.com)  Fax: 1-631-938-8127

 45-1 Ramsey Road, Shirley, NY 11967, USA

µg/ml is recommended. Dissolve the lyophilized protein in distilled water.

## GENE INFORMATION

**Gene Name** [FGFR2 fibroblast growth factor receptor 2 \[ Homo sapiens \]](#)

**Official Symbol** [FGFR2](#)

**Synonyms** FGFR2; fibroblast growth factor receptor 2; bacteria expressed kinase , BEK, CFD1, craniofacial dysostosis 1 , Jackson Weiss syndrome , JWS, keratinocyte growth factor receptor , KGFR; CD332; CEK3; Crouzon syndrome; ECT1; K SAM; Pfeiffer syndrome; TK14; TK25; FGFR-2; FGF receptor; soluble FGFR4 variant 4; bacteria-expressed kinase; hydroxyaryl-protein kinase; keratinocyte growth factor receptor; BEK fibroblast growth factor receptor; protein tyrosine kinase, receptor like 14; BEK; JWS; CFD1; KGFR; BFR-1; K-SAM; FLJ98662;

**Gene ID** [2263](#)

**mRNA Refseq** [NM\\_000141](#)

**Protein Refseq** [NP\\_000132](#)

**MIM** [176943](#)

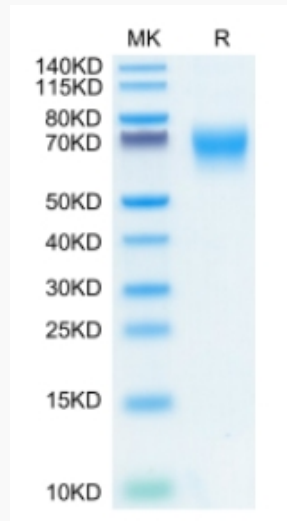
**UniProt ID** [P21802](#)

 Tel: 1-631-559-9269 1-516-512-3133

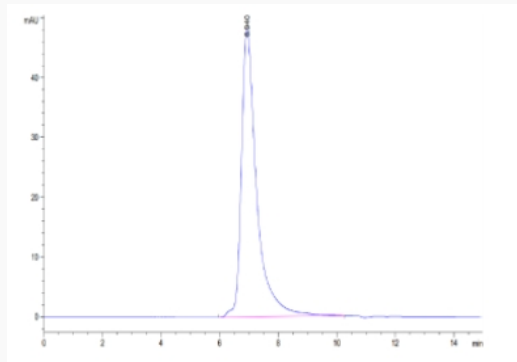
 Email: [info@creative-biomart.com](mailto:info@creative-biomart.com)  Fax: 1-631-938-8127

 45-1 Ramsey Road, Shirley, NY 11967, USA

**Tris-Bis PAGE**



**SEC-HPLC**



 Tel: 1-631-559-9269 1-516-512-3133

 Email: [info@creative-biomart.com](mailto:info@creative-biomart.com)  Fax: 1-631-938-8127

 45-1 Ramsey Road, Shirley, NY 11967, USA