

## Recombinant Human FGFR2 Protein, GST-tagged

Cat. No. FGFR2-4130H Lot. No. (See product label)

### SPECIFICATION

**Product Overview** Human FGFR2 full-length ORF ( AAH39243.2, 1 a.a. - 723 a.a.) recombinant protein with GST-tag at N-terminal.

**Species** Human

**Source** Wheat Germ

**Description** The protein encoded by this gene is a member of the fibroblast growth factor receptor family, where amino acid sequence is highly conserved between members and throughout evolution. FGFR family members differ from one another in their ligand affinities and tissue distribution. A full-length representative protein consists of an extracellular region, composed of three immunoglobulin-like domains, a single hydrophobic membrane-spanning segment and a cytoplasmic tyrosine kinase domain. The extracellular portion of the protein interacts with fibroblast growth factors, setting in motion a cascade of downstream signals, ultimately influencing mitogenesis and differentiation. This particular family member is a high-affinity receptor for acidic, basic and/or keratinocyte growth factor, depending on the isoform. Mutations in this gene are associated with Crouzon syndrome, Pfeiffer syndrome, Craniosynostosis, Apert syndrome, Jackson-Weiss syndrome, Beare-Stevenson cutis gyrata syndrome, Saethre-Chotzen syndrome, and syndromic craniosynostosis. Multiple alternatively spliced transcript variants encoding different isoforms have been noted for this gene. [provided by RefSeq]

**Molecular Mass** 105.27 kDa

 Tel: 1-631-559-9269 1-516-512-3133

 Email: [info@creative-biomart.com](mailto:info@creative-biomart.com)  Fax: 1-631-938-8127

 45-1 Ramsey Road, Shirley, NY 11967, USA

**AA Sequence**

MGLTSTWRYGRGPGIGTVMVSWGRFICLVVVTMATLSLARPSFSLVEDTTLEPEG  
 APYWTNTEKMEKRLHAVPAANTVKFRCPAGGNPMPTMRWLKNGKEFKQEHRIGG  
 YKVRNQHWSLIMESVVP SDKGN YTCV VENEYGSINHTYHLDVVERS PHRPILQAGL  
 PANASTVVG DV FVCKVYSDAQPHIQWIKHVEKNGSKYGPDGLPYLKV LKAAGVN  
 TTDKEIEVLYIRNVTFEDAGEYTCLAGNSIGISFHSAWLTVLPAPGREKEITASPDYLEI  
 AIYCIGVFLIACMVVTVILCRMKNTTKKPDFSSQPAVHKLTKRIPLRRQVSAESSSSM  
 NSNTPLVRITRLSSTADTPMLAGVSEYELPEDPKWEFPRDKLTLGKPLGEGCFGQV  
 VMAEAVGIDKDKPKEAVTVAVKMLKDDATEKDLSDLASEMEMMMKMGKHENIINLLG  
 ACTQDGPLYVIVEYASKGNLREYLRARRPPGMEYSYDINRVPEEQMTFEDLVSCTY  
 QLARGMEYLASQKCIHRDLAARNVLVTENNVMKIADFG LARDINNIDYYKKTNGRL  
 PVKWM APEALFDRVYTHQSDVWSFGVLMWEIFTLGGSPYPGIPVEELLKLLKEGHR  
 MDKPANCTNELYMMMRDCWHAVPSQRPTFKQLVEDLDRILTLTTNEEYLDLSQPLE  
 QYSPSYPDTRSSCSSGDDSVFSPDPMPYEPCLPQYPHINGSVKT

**Applications**

Enzyme-linked Immunoabsorbent Assay  
 Western Blot (Recombinant protein)  
 Antibody Production  
 Protein Array

**Notes**

Best use within three months from the date of receipt of this protein.

**Storage**

Store at -80 centigrade. Aliquot to avoid repeated freezing and thawing.

**Storage Buffer**

50 mM Tris-HCl, 10 mM reduced Glutathione, pH=8.0 in the elution buffer.

**GENE INFORMATION**
**Gene Name**


FGFR2 fibroblast growth factor receptor 2 [ Homo sapiens ]

**Official Symbol**

FGFR2

 Tel: 1-631-559-9269 1-516-512-3133

 Email: [info@creative-biomart.com](mailto:info@creative-biomart.com)  Fax: 1-631-938-8127

 45-1 Ramsey Road, Shirley, NY 11967, USA

**Synonyms**

FGFR2; fibroblast growth factor receptor 2; bacteria expressed kinase, BEK, CFD1, craniofacial dysostosis 1, Jackson Weiss syndrome, JWS, keratinocyte growth factor receptor, KGFR; CD332; CEK3; Crouzon syndrome; ECT1; K SAM; Pfeiffer syndrome; TK14; TK25; FGFR-2; FGF receptor; soluble FGFR4 variant 4; bacteria-expressed kinase; hydroxyaryl-protein kinase; keratinocyte growth factor receptor; BEK fibroblast growth factor receptor; protein tyrosine kinase, receptor like 14; BEK; JWS; CFD1; KGFR; BFR-1; K-SAM; FLJ98662;

**Gene ID**

2263

**mRNA Refseq**

NM\_000141

**Protein Refseq**

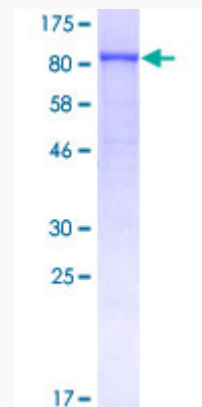
NP\_000132

**MIM**

176943

**UniProt ID**

P21802

**Quality Control Testing**


12.5% SDS-PAGE Stained with Coomassie Blue.

 Tel: 1-631-559-9269 1-516-512-3133

 Email: [info@creative-biomart.com](mailto:info@creative-biomart.com)  Fax: 1-631-938-8127

 45-1 Ramsey Road, Shirley, NY 11967, USA