

Active Recombinant Human FGFR2 protein, His-tagged

Cat. No. FGFR2-621H Lot. No. (See product label)

SPECIFICATION

Product Overview	Active Recombinant Human FGFR2 protein(NP_000132.3)(Met 1-Glu 377) was expressed in HEK293, fused with a polyhistidine tag at the C-terminus.
Species	Human
Source	HEK293
ProteinLength	1-377 aa
Form	Lyophilized from sterile PBS, pH 7.4.
Bio-activity	Measured by its ability to inhibit FGF acidic dependent proliferation of Balb/c3T3 mouse embryonic fibroblasts. The ED50 for this effect is typically 200-400 ng/mL.
Molecular Mass	The recombinant human FGFR2 consists of 367 amino acids after removal of the signal peptide and has a calculated molecular mass of 41 kDa. In SDS-PAGE under reducing conditions, the apparent molecular mass of rhFGFR2 is approximately 65-75 kDa due to glycosylation.
Endotoxin	< 1.0 EU per µg of the protein as determined by the LAL method.
Purity	> 97 % as determined by SDS-PAGE
Storage	Store it under sterile conditions at -20°C to -80°C upon receiving. Recommend to aliquot the protein into smaller quantities for optimal storage. Avoid repeated freeze-

 Tel: 1-631-559-9269 1-516-512-3133

 Email: info@creative-biomart.com  Fax: 1-631-938-8127

 45-1 Ramsey Road, Shirley, NY 11967, USA

thaw cycles.

Reconstitution

It is recommended that sterile water be added to the vial to prepare a stock solution of 0.2 ug/ul. Centrifuge the vial at 4°C before opening to recover the entire contents.

GENE INFORMATION

Gene Name [FGFR2 fibroblast growth factor receptor 2 \[Homo sapiens \]](#)

Official Symbol [FGFR2](#)

Synonyms

FGFR2; fibroblast growth factor receptor 2; bacteria expressed kinase , BEK, CFD1, craniofacial dysostosis 1 , Jackson Weiss syndrome , JWS, keratinocyte growth factor receptor , KGFR; CD332; CEK3; Crouzon syndrome; ECT1; K SAM; Pfeiffer syndrome; TK14; TK25; FGFR-2; FGF receptor; soluble FGFR4 variant 4; bacteria-expressed kinase; hydroxyaryl-protein kinase; keratinocyte growth factor receptor; BEK fibroblast growth factor receptor; protein tyrosine kinase, receptor like 14; BEK; JWS; CFD1; KGFR; BFR-1; K-SAM; FLJ98662;

Gene ID [2263](#)

mRNA Refseq [NM_000141](#)

Protein Refseq [NP_000132](#)

MIM [176943](#)

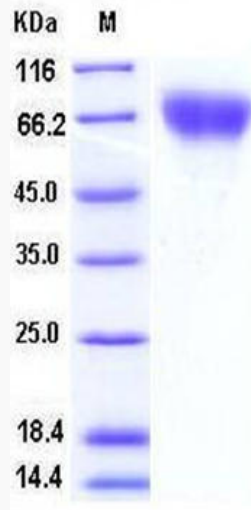
UniProt ID [P21802](#)

 Tel: 1-631-559-9269 1-516-512-3133

 Email: info@creative-biomart.com  Fax: 1-631-938-8127

 45-1 Ramsey Road, Shirley, NY 11967, USA

SDS-PAGE



 Tel: 1-631-559-9269 1-516-512-3133

 Email: info@creative-biomart.com  Fax: 1-631-938-8127

 45-1 Ramsey Road, Shirley, NY 11967, USA