

Recombinant Human FGFR3 protein, His-Avi-tagged

Cat. No. FGFR3-608H Lot. No. (See product label)

SPECIFICATION

Product Overview	Recombinant Human FGFR3 protein(P22607-2)(Glu23-Gly377(IIIb)), fused with C-terminal His and Avi tag, was expressed in HEK293.
Species	Human
Source	HEK293
ProteinLength	Glu23-Gly377(IIIb)
Tag	C-His-Avi
Form	Lyophilized from 0.22µm filtered solution in PBS (pH 7.4). Normally 8% trehalose is added as protectant before lyophilization.
Bio-activity	Immobilized Human FGFR3 alpha (IIIb) , His Tag at 1µg/ml (100µl/well) on the plate. Dose response curve for Anti-FGFR3 Antibody, hFc Tag with the EC50 of 4.0ng/ml determined by ELISA.
Molecular Mass	The protein has a predicted MW of 41.4 kDa. Due to glycosylation, the protein migrates to 65-75 kDa based on Tris-Bis PAGE result.
Endotoxin	Less than 1EU per µg by the LAL method.
Purity	> 95% as determined by Tris-Bis PAGE; > 95% as determined by HPLC

 Tel: 1-631-559-9269 1-516-512-3133

 Email: info@creative-biomart.com  Fax: 1-631-938-8127

 45-1 Ramsey Road, Shirley, NY 11967, USA

Storage Reconstituted protein stable at -80°C for 12 months, 4°C for 1 week. Use a manual defrost freezer and avoid repeated freeze-thaw cycles.

Reconstitution Centrifuge tubes before opening. Reconstituting to a concentration more than 100 µg/ml is recommended. Dissolve the lyophilized protein in distilled water.

GENE INFORMATION

Gene Name [FGFR3 fibroblast growth factor receptor 3 \[Homo sapiens \]](#)

Official Symbol [FGFR3](#)

Synonyms FGFR3; fibroblast growth factor receptor 3; ACH, achondroplasia, thanatophoric dwarfism; CD333; CEK2; JTK4; FGFR-3; tyrosine kinase JTK4; hydroxyaryl-protein kinase; ACH; HSGFR3EX;

Gene ID [2261](#)

mRNA Refseq [NM_000142](#)

Protein Refseq [NP_000133](#)

MIM [134934](#)

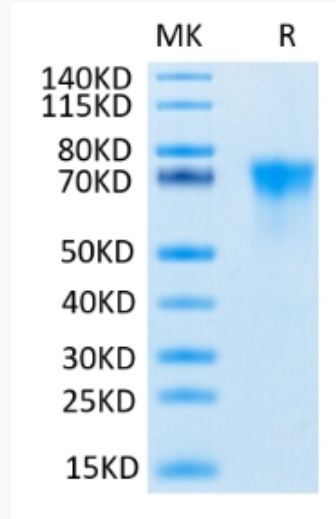
UniProt ID [P22607](#)

 Tel: 1-631-559-9269 1-516-512-3133

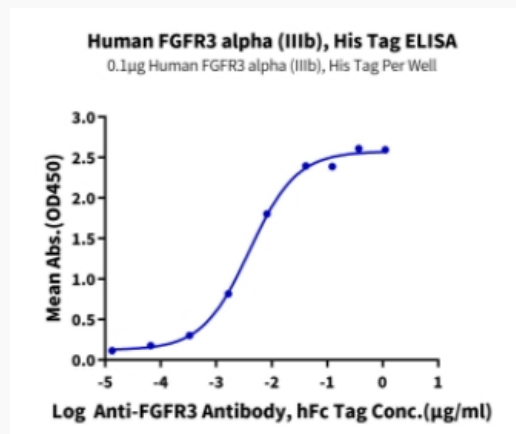
 Email: info@creative-biomart.com  Fax: 1-631-938-8127

 45-1 Ramsey Road, Shirley, NY 11967, USA

Tris-Bis PAGE



ELISA Data



 Tel: 1-631-559-9269 1-516-512-3133

 Email: info@creative-biomart.com  Fax: 1-631-938-8127

 45-1 Ramsey Road, Shirley, NY 11967, USA