

## Recombinant Human FGFR3 protein, His-Avi-tagged

Cat. No. FGFR3-613H Lot. No. (See product label)

### SPECIFICATION

<b>Product Overview</b>	Recombinant Human FGFR3 protein(P22607-2)(Asp127-Gly375), fused with C-terminal His and Avi tag, was expressed in HEK293.
<b>Species</b>	Human
<b>Source</b>	HEK293
<b>ProteinLength</b>	Asp127-Gly375
<b>Tag</b>	C-His-Avi
<b>Form</b>	Lyophilized from 0.22µm filtered solution in PBS (pH 7.4). Normally 5% trehalose is added as protectant before lyophilization.
<b>Bio-activity</b>	Immobilized Human FGFR3 beta (IIIb), His Tag at 2ug/ml (100ul/well) on the plate. Dose response curve for Anti-FGFR3 Antibody, hFc Tag with the EC50 of 5.8ng/ml determined by ELISA.
<b>Molecular Mass</b>	The protein has a predicted MW of 30.5 kDa. Due to glycosylation, the protein migrates to 40-55 kDa based on Tris-Bis PAGE result.
<b>Endotoxin</b>	Less than 1EU per µg by the LAL method.
<b>Purity</b>	> 95% as determined by Tris-Bis PAGE;> 95% as determined by HPLC

 Tel: 1-631-559-9269 1-516-512-3133

 Email: [info@creative-biomart.com](mailto:info@creative-biomart.com)  Fax: 1-631-938-8127

 45-1 Ramsey Road, Shirley, NY 11967, USA

**Storage** Reconstituted protein stable at -80°C for 12 months, 4°C for 1 week. Use a manual defrost freezer and avoid repeated freeze-thaw cycles.

**Reconstitution** Centrifuge tubes before opening. Reconstituting to a concentration more than 100 µg/ml is recommended. Dissolve the lyophilized protein in distilled water.

## GENE INFORMATION

**Gene Name** [FGFR3 fibroblast growth factor receptor 3 \[ Homo sapiens \]](#)

**Official Symbol** [FGFR3](#)

**Synonyms** FGFR3; fibroblast growth factor receptor 3; ACH, achondroplasia, thanatophoric dwarfism; CD333; CEK2; JTK4; FGFR-3; tyrosine kinase JTK4; hydroxyaryl-protein kinase; ACH; HSGFR3EX;

**Gene ID** [2261](#)

**mRNA Refseq** [NM\\_000142](#)

**Protein Refseq** [NP\\_000133](#)

**MIM** [134934](#)

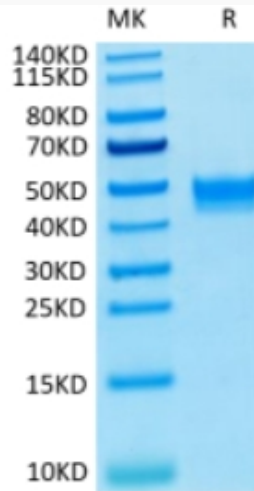
**UniProt ID** [P22607](#)

 Tel: 1-631-559-9269 1-516-512-3133

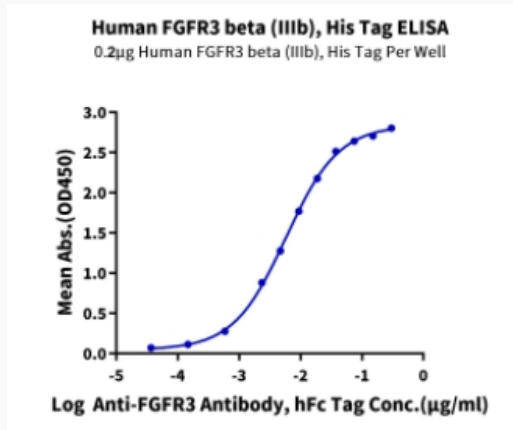
 Email: [info@creative-biomart.com](mailto:info@creative-biomart.com)  Fax: 1-631-938-8127

 45-1 Ramsey Road, Shirley, NY 11967, USA

**Tris-Bis PAGE**



**ELISA Data**



 Tel: 1-631-559-9269 1-516-512-3133

 Email: [info@creative-biomart.com](mailto:info@creative-biomart.com)  Fax: 1-631-938-8127

 45-1 Ramsey Road, Shirley, NY 11967, USA