

## Recombinant Human FGFR4 protein, hFc-tagged

Cat. No. FGFR4-141H Lot. No. (See product label)

### SPECIFICATION

<b>Product Overview</b>	Recombinant Human FGFR4 protein(P22455)(Leu22-Asp369), fused with C-terminal hFc tag, was expressed in HEK293.
<b>Species</b>	Human
<b>Source</b>	HEK293
<b>ProteinLength</b>	Leu22-Asp369
<b>Tag</b>	C-hFc
<b>Form</b>	Lyophilized from 0.22µm filtered solution in PBS (pH 7.4). Normally 5% trehalose is added as protectant before lyophilization.
<b>Bio-activity</b>	Human FGFR4, hFc Tag captured on CM5 Chip via Protein A can bind Human Beta Klotho, His Tag with an affinity constant of 13.05 nM as determined in SPR assay (Biacore T200).
<b>Molecular Mass</b>	The protein has a predicted MW of 65.3 kDa. Due to glycosylation, the protein migrates to 80-95 kDa based on Tris-Bis PAGE result.
<b>Endotoxin</b>	Less than 1EU per µg by the LAL method.
<b>Purity</b>	> 95% as determined by Tris-Bis PAGE; > 95% as determined by HPLC

 Tel: 1-631-559-9269 1-516-512-3133

 Email: [info@creative-biomart.com](mailto:info@creative-biomart.com)  Fax: 1-631-938-8127

 45-1 Ramsey Road, Shirley, NY 11967, USA

**Storage** Reconstituted protein stable at -80°C for 12 months, 4°C for 1 week. Use a manual defrost freezer and avoid repeated freeze-thaw cycles.

**Reconstitution** Centrifuge tubes before opening. Reconstituting to a concentration more than 100 µg/ml is recommended. Dissolve the lyophilized protein in distilled water.

## GENE INFORMATION

**Gene Name** [FGFR4 fibroblast growth factor receptor 4 \[ Homo sapiens \]](#)

**Official Symbol** [FGFR4](#)

**Synonyms** FGFR4; fibroblast growth factor receptor 4; CD334; JTK2; FGFR-4; tyrosylprotein kinase; protein-tyrosine kinase; hydroxyaryl-protein kinase; tyrosine kinase related to fibroblast growth factor receptor; TKF; MGC20292;

**Gene ID** [2264](#)

**mRNA Refseq** [NM\\_002011](#)

**Protein Refseq** [NP\\_002002](#)

**MIM** [134935](#)

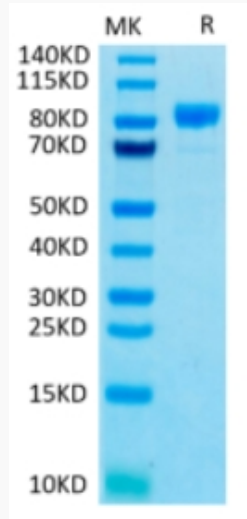
**UniProt ID** [P22455](#)

 Tel: 1-631-559-9269 1-516-512-3133

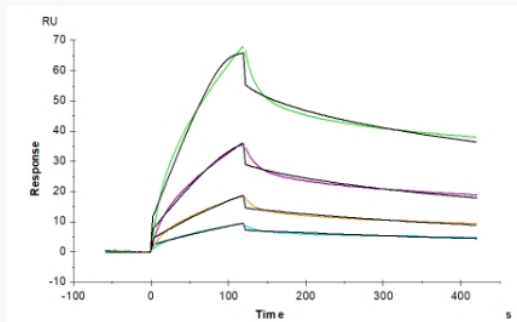
 Email: [info@creative-biomart.com](mailto:info@creative-biomart.com)  Fax: 1-631-938-8127

 45-1 Ramsey Road, Shirley, NY 11967, USA

Tris-Bis PAGE



SPR Data



 Tel: 1-631-559-9269 1-516-512-3133

 Email: [info@creative-biomart.com](mailto:info@creative-biomart.com)  Fax: 1-631-938-8127

 45-1 Ramsey Road, Shirley, NY 11967, USA