

Recombinant Human FGFR1 protein, His-tagged

Cat. No. FGFR1-8855H Lot. No. (See product label)

SPECIFICATION

Product Overview	Recombinant Human FGFR1 protein(28-336 aa), fused with N-terminal His tag, was expressed in E.coli.
Species	Human
Source	E.coli
ProteinLength	28-336 aa
Form	The purified protein was lyophilized from sterile phosphate-buffered saline (PBS: 58 mM Na ₂ HPO ₄ , 17 mM NaH ₂ PO ₄ , 68 mM NaCl, pH 7.4). Prior to lyophilization, 5% (w/v) trehalose and 5% (w/v) mannitol were incorporated as cryoprotective excipients.
AASequence	PPKMADKVVPRQVARLGRVRLQCPVEGDPPPLTMWTKDGRTHSGWSRFRVLPQ GLKVKQVEREDAGVYVCKATNGFGSLSVNYTLVVLDDISPGKESLGPDSSSGGQED PASQQWARPRFTQPSKMRRRVIARVPGSSVRLKCVASGHPRPDITWMKDDQALTR PEAAEPRKKKWTLSLKNLRPEDSGKYTCRVSNRAGAINATYKVDVIQRTRSKPVLTG THPVNTTVDFGGTTSFQCKVRSVDPVIQWLKRVEYGAEGRHNSIDVGGQKFVVL PTGDVWSRPDGSYLNKLLITRARQDDAGMY
Purity	90%, by SDS-PAGE with Coomassie Brilliant Blue staining.
Storage	Store at 2-8°C for 1-2 weeks. Aliquot and store at -20°C to -80°C for up to 3 months, reconstitution with sterile water and addition of an equal volume of glycerol. Avoid

Tel: 1-631-559-9269 1-516-512-3133

Email: info@creative-biomart.com Fax: 1-631-938-8127

45-1 Ramsey Road, Shirley, NY 11967, USA

repeat freeze-thaw cycles.

Reconstitution

Dissolve the product in 200 µl sterile water to achieve a working concentration of 0.25 g/µl. If experimental compatibility allows, mix the aqueous solution with an equal volume of glycerol (1:1 ratio) after initial reconstitution.

GENE INFORMATION

Gene Name

FGFRL1 fibroblast growth factor receptor-like 1 [Homo sapiens]

Official Symbol

FGFRL1

Synonyms

FGFRL1; fibroblast growth factor receptor-like 1; FGFR-5; FGFR-like protein; FGF receptor-like protein 1; FGF homologous factor receptor; fibroblast growth factor receptor 5; FHFR; FGFR5;

Gene ID

53834

mRNA Refseq

NM_001004356

Protein Refseq

NP_001004356

MIM

605830

UniProt ID

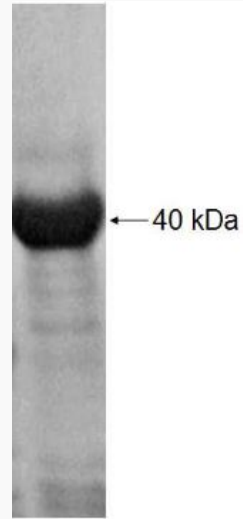
Q8N441

 Tel: 1-631-559-9269 1-516-512-3133

 Email: info@creative-biomart.com  Fax: 1-631-938-8127

 45-1 Ramsey Road, Shirley, NY 11967, USA

SDS-PAGE



 Tel: 1-631-559-9269 1-516-512-3133

 Email: info@creative-biomart.com  Fax: 1-631-938-8127

 45-1 Ramsey Road, Shirley, NY 11967, USA