

# Recombinant Human FGG Protein, MYC/DDK-tagged, C13 and N15-labeled

**Cat. No.** FGG-427H    **Lot. No.** (See product label)

## SPECIFICATION

<b>Product Overview</b>	FGG MS Standard C13 and N15-labeled recombinant protein (NP_000500) with a C-terminal MYC/DDK tag, was expressed in HEK293 cells.
<b>Species</b>	Human
<b>Source</b>	HEK293
<b>Description</b>	<p>The protein encoded by this gene is the gamma component of fibrinogen, a blood-borne glycoprotein comprised of three pairs of nonidentical polypeptide chains. Following vascular injury, fibrinogen is cleaved by thrombin to form fibrin which is the most abundant component of blood clots. In addition, various cleavage products of fibrinogen and fibrin regulate cell adhesion and spreading, display vasoconstrictor and chemotactic activities, and are mitogens for several cell types. Mutations in this gene lead to several disorders, including dysfibrinogenemia, hypofibrinogenemia and thrombophilia. Alternative splicing results in transcript variants encoding different isoforms. [provided by RefSeq, Aug 2015]</p>
<b>Molecular Mass</b>	49.5 kDa
<b>AA Sequence</b>	<p>MSWSLHPRNLILYFYALLFLSSTCVAYVATRDNCCILDERFGSYCPTTCGIADFLSTY            QTKVDKDLQSLEDILHQVENKTSEVKQLIKAIQLTYNPDESSKPNMIDAATLKSRLKML            EEIMKYEASILTHDSSIRYLQEIYNSNNQKIVNLKEKVAQLEAQCQEPCKDVTQIHDT            GKDCQDIANKGAKQSGLYFIKPLKANQQFLVYCEIDGSGNGWTVFQKRLDGSVDFK</p>

 Tel: 1-631-559-9269    1-516-512-3133

 Email: [info@creative-biomart.com](mailto:info@creative-biomart.com)     Fax: 1-631-938-8127

 45-1 Ramsey Road, Shirley, NY 11967, USA

KNWIQYKEGFGHLSPTGTTEFWLGNEKIHLISTQSAIPYALRVELEDWNGRTSTADY  
 AMFKVGP EADKYRLTYAYFAGGDAGDAFDGDFGDDPSDKFFTS HNGMQFSTWD  
 NDNDKFE GNCAEQD GSGWWMNKCHAGHLNGVYYQGGTYSKASTPNGYDNGI IWA  
 TWKTRWYSMKKTTMKIIPFNRLTIGEGQQHHLGGAKQAGDVTRTRPLEQKLISEEDL  
 AANDILDYKDDDDKV

**Purity** > 80% as determined by SDS-PAGE and Coomassie blue staining

**Stability** Stable for 3 months from receipt of products under proper storage and handling conditions.

**Storage** Store at -80 centigrade. Avoid repeated freeze-thaw cycles.

**Concentration** 50 µg/mL as determined by BCA

**Storage Buffer** 100 mM glycine, 25 mM Tris-HCl, pH 7.3.

## GENE INFORMATION

**Gene Name** FGG fibrinogen gamma chain [ Homo sapiens (human) ]

**Official Symbol** FGG

**Synonyms** FGG; fibrinogen gamma chain; fibrinogen, gamma polypeptide;

**Gene ID** 2266

**mRNA Refseq** NM\_000509

**Protein Refseq** NP\_000500

 Tel: 1-631-559-9269 1-516-512-3133

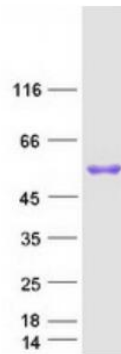
 Email: [info@creative-biomart.com](mailto:info@creative-biomart.com)  Fax: 1-631-938-8127

 45-1 Ramsey Road, Shirley, NY 11967, USA

**MIM** 134850

**UniProt ID** P02679

**SDS-PAGE**



 Tel: 1-631-559-9269 1-516-512-3133

 Email: [info@creative-biomart.com](mailto:info@creative-biomart.com)  Fax: 1-631-938-8127

 45-1 Ramsey Road, Shirley, NY 11967, USA