

# Recombinant Full Length Human FGL2 Protein, C-Flag-tagged

Cat. No. FGL2-298HFL Lot. No. (See product label)

## SPECIFICATION

<b>Product Overview</b>	Recombinant Full Length Human FGL2 Protein, fused to Flag-tag at C-terminus, was expressed in Mammalian cells.
<b>Species</b>	Human
<b>Source</b>	Mammalian Cells
<b>Description</b>	The protein encoded by this gene is a secreted protein that is similar to the beta- and gamma-chains of fibrinogen. The carboxyl-terminus of the encoded protein consists of the fibrinogen-related domains (FRED). The encoded protein forms a tetrameric complex which is stabilized by interchain disulfide bonds. This protein may play a role in physiologic functions at mucosal sites.
<b>Form</b>	25 mM Tris HCl, pH 7.3, 100 mM glycine, 10% glycerol.
<b>Molecular Mass</b>	47.6 kDa
<b>AA Sequence</b>	MKLANWYWLSSAVLATYGFLVVANNETEEIKDERAKDVCPVRLESRGKCEEAGECP YQVSLPPLTIQLPK QFSRIEEVFKEVQNLKEIVNSLKKSCQDCKLQADDNGDPGRNG LLLPSTGAPGEVGDNRVRELESEVNKL SSELKNAKEEINVLHGRLEKLNLVNMNIE NYVDSKVANLTFVNSLDGKCSKCPSQEIQSRPVQHLYIY KDCSDYYAIGKRSSETY RVTPDPKNSSFEVYCDMETMGGGWTVLQARLDGSTNFTRTWQDYKAGFGNLR E FWLGNDKIHLLTKSKEMILRIDLEDFNGVELYALYDQFYVANEFLKYRLHVGNYNGTA GDALRFNKHYN HDLKFFFTTPDKDNDRYPSGNCGLYSSGWVFDACLSANLNGKY YHQKYRGVRNGIFWGTWPGVSEAHPPG

 Tel: 1-631-559-9269 1-516-512-3133

 Email: [info@creative-biomart.com](mailto:info@creative-biomart.com)  Fax: 1-631-938-8127

 45-1 Ramsey Road, Shirley, NY 11967, USA

YKSSFKEAKMMIRPKHFKPTRTRPLEQKLISEEDLAANDILDYKDDDDKV

<b>Purity</b>	> 80% as determined by SDS-PAGE and Coomassie blue staining.
<b>Stability</b>	Stable for 12 months from the date of receipt of the product under proper storage and handling conditions. Avoid repeated freeze-thaw cycles.
<b>Storage</b>	Store at -80 centigrade.
<b>Concentration</b>	>50 ug/mL as determined by microplate BCA method.
<b>Preparation</b>	Recombinant protein was captured through anti-DDK affinity column followed by conventional chromatography steps.
<b>Protein Families</b>	Druggable Genome, Secreted Protein
<b>Full Length</b>	Full L.

## GENE INFORMATION

<b>Gene Name</b>	FGL2 fibrinogen like 2 [ Homo sapiens (human) ]
<b>Official Symbol</b>	FGL2
<b>Synonyms</b>	T49; pT49
<b>Gene ID</b>	10875
<b>mRNA Refseq</b>	NM_006682.3
<b>Protein Refseq</b>	NP_006673.1

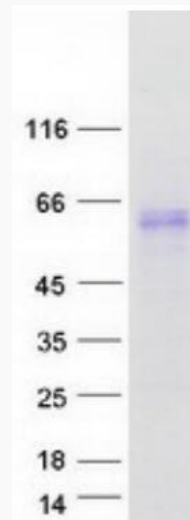
 Tel: 1-631-559-9269 1-516-512-3133

 Email: [info@creative-biomart.com](mailto:info@creative-biomart.com)  Fax: 1-631-938-8127

 45-1 Ramsey Road, Shirley, NY 11967, USA

**MIM** 605351

**UniProt ID** Q14314



Coomassie blue staining of purified FGL2 protein.

 Tel: 1-631-559-9269 1-516-512-3133

 Email: [info@creative-biomart.com](mailto:info@creative-biomart.com)  Fax: 1-631-938-8127

 45-1 Ramsey Road, Shirley, NY 11967, USA