

Recombinant Human FH Protein, GST-tagged

Cat. No. FH-4158H Lot. No. (See product label)

SPECIFICATION

Product Overview	Human FH full-length ORF (AAH03108, 33 a.a. - 510 a.a.) recombinant protein with GST-tag at N-terminal.
Species	Human
Source	Wheat Germ
Description	The protein encoded by this gene is an enzymatic component of the tricarboxylic acid (TCA) cycle, or Krebs cycle, and catalyzes the formation of L-malate from fumarate. It exists in both a cytosolic form and an N-terminal extended form, differing only in the translation start site used. The N-terminal extended form is targeted to the mitochondrion, where the removal of the extension generates the same form as in the cytoplasm. It is similar to some thermostable class II fumarases and functions as a homotetramer. Mutations in this gene can cause fumarase deficiency and lead to progressive encephalopathy. [provided by RefSeq]
Molecular Mass	78.32 kDa
AA Sequence	VPSFWPPNAARMASQNSFRIEYDTFGELKVPNDKYYGAQTVRSTMNFKIGGVTERM PTPVIKAFGILKRAAAEVNQDYGLDPKIANAIMKAADEVAEGKLNDFPLVWVWQTGS GTQTNMNVNEVISNRAIEMLGELGSKIPVHPNDHVNKSQSSNDTFPTAMHIAAAIE VHEVLLPGLQKLHDALDAKSKEFAQIIKIGRTHTQDAVPLTLGQEFSGYVQQVKYAM TRIKAAMPRIYELAAGGTAVGTGLNTRIGFAEKVAAKVAALTGLPFVTAPNKFEALAA HDALVELSGAMNTTACSLMKIANDIRFLGSGPRSGLGELILPENEPGSSIMPGKVNPT

 Tel: 1-631-559-9269 1-516-512-3133

 Email: info@creative-biomart.com  Fax: 1-631-938-8127

 45-1 Ramsey Road, Shirley, NY 11967, USA

QCEAMTMVAAQVMGNHVAVTVGGSNHGFELNVFKPMMIKNVLHSARLLGDASVSF
 TENCVVGIQANTERINKLMNESLMLVTALNPHIGYDKAAKIAKTAHKNGSTLKETAIEL
 GYLTAEQFDEWVKPKDMLGPK

Applications	Enzyme-linked Immunoabsorbent Assay Western Blot (Recombinant protein) Antibody Production Protein Array
Notes	Best use within three months from the date of receipt of this protein.
Storage	Store at -80 centigrade. Aliquot to avoid repeated freezing and thawing.
Storage Buffer	50 mM Tris-HCl, 10 mM reduced Glutathione, pH=8.0 in the elution buffer.

GENE INFORMATION

Gene Name	FH fumarate hydratase [Homo sapiens]
Official Symbol	FH
Synonyms	FH; fumarate hydratase; fumarate hydratase, mitochondrial; fumarase; MCL; LRCC; HLRCC; MCUL1;
Gene ID	2271
mRNA Refseq	NM_000143
Protein Refseq	NP_000134
MIM	136850

 Tel: 1-631-559-9269 1-516-512-3133

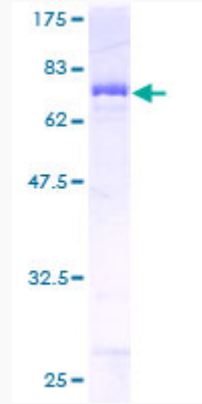
 Email: info@creative-biomart.com  Fax: 1-631-938-8127

 45-1 Ramsey Road, Shirley, NY 11967, USA

UniProt ID

P07954

Quality Control
Testing



12.5% SDS-PAGE Stained with Coomassie Blue.

 Tel: 1-631-559-9269 1-516-512-3133

 Email: info@creative-biomart.com  Fax: 1-631-938-8127

 45-1 Ramsey Road, Shirley, NY 11967, USA