

Recombinant Human FHIT Protein, GST-tagged

Cat. No. FHIT-4159H Lot. No. (See product label)

SPECIFICATION

Product Overview	Human FHIT partial ORF (AAH32336, 31 a.a. - 130 a.a.) recombinant protein with GST-tag at N-terminal.
Species	Human
Source	Wheat Germ
Description	This gene, a member of the histidine triad gene family, encodes a diadenosine 5,5-P1,P3-triphosphate hydrolase involved in purine metabolism. The gene encompasses the common fragile site FRA3B on chromosome 3, where carcinogen-induced damage can lead to translocations and aberrant transcripts of this gene. In fact, aberrant transcripts from this gene have been found in about half of all esophageal, stomach, and colon carcinomas. [provided by RefSeq]
Molecular Mass	36.63 kDa
AA Sequence	VVPGHVLVCPLRPVERFHDLRPDEVADLFQTTQRVGTVVEKHFHGTSLTFSMQDGP EAGQTVKHVHVHVLPRKAGDFHRNDSIYEELQKHKEDFPASWR
Applications	Enzyme-linked Immunoabsorbent Assay Western Blot (Recombinant protein) Antibody Production Protein Array
Notes	Best use within three months from the date of receipt of this protein.

 Tel: 1-631-559-9269 1-516-512-3133

 Email: info@creative-biomart.com  Fax: 1-631-938-8127

 45-1 Ramsey Road, Shirley, NY 11967, USA

Storage Store at -80 centigrade. Aliquot to avoid repeated freezing and thawing.

Storage Buffer 50 mM Tris-HCl, 10 mM reduced Glutathione, pH=8.0 in the elution buffer.

GENE INFORMATION

Gene Name FHIT fragile histidine triad [Homo sapiens]

Official Symbol FHIT

Synonyms FHIT; fragile histidine triad; fragile histidine triad gene; bis(5-adenosyl)-triphosphatase; AP3Aase; FRA3B; AP3A hydrolase; tumor suppressor protein; dinucleosidetriphosphatase; diadenosine 5,5-P1,P3-triphosphate hydrolase;

Gene ID [2272](#)

mRNA Refseq [NM_001166243](#)

Protein Refseq [NP_001159715](#)

MIM [601153](#)

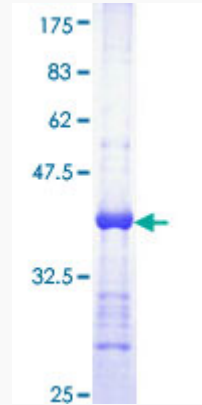
UniProt ID [P49789](#)

 Tel: 1-631-559-9269 1-516-512-3133

 Email: info@creative-biomart.com  Fax: 1-631-938-8127

 45-1 Ramsey Road, Shirley, NY 11967, USA

**Quality Control
Testing**



12.5% SDS-PAGE Stained with Coomassie Blue.

 Tel: 1-631-559-9269 1-516-512-3133

 Email: info@creative-biomart.com  Fax: 1-631-938-8127

 45-1 Ramsey Road, Shirley, NY 11967, USA