

Recombinant Full Length Human FHL1 Protein, C-Flag-tagged

Cat. No. FHL1-1688HFL **Lot. No.** (See product label)

SPECIFICATION

Product Overview	Recombinant Full Length Human FHL1 Protein, fused to Flag-tag at C-terminus, was expressed in Mammalian cells.
Species	Human
Source	Mammalian Cells
Description	This gene encodes a member of the four-and-a-half-LIM-only protein family. Family members contain two highly conserved, tandemly arranged, zinc finger domains with four highly conserved cysteines binding a zinc atom in each zinc finger. Expression of these family members occurs in a cell- and tissue-specific mode and these proteins are involved in many cellular processes. Mutations in this gene have been found in patients with Emery-Dreifuss muscular dystrophy. Multiple alternately spliced transcript variants which encode different protein isoforms have been described.
Form	25 mM Tris HCl, pH 7.3, 100 mM glycine, 10% glycerol.
Molecular Mass	31.7 kDa
AA Sequence	MAEKFDCHYCRDPLQGKKYVQKDGHHCLKCFDKFCANTCVECRKPIGADSKEVH YKNRFWHDTCFRCAKCLHPLANETFVAKDNKILCNKCTTREDSPKCKGCFKAIVAG DQNVEYKGTVWHKDCFTCSNCKQVIGTGSFFPKGEDFYCVTCHETKFAKHCVKCN KAITSGGITYQDQPWHADCFVCVTCSKLAGQRFTAVEDQYYCVDICYKNFVAKKCA GCKNPITGKRTVSRVSHPVSKARKPPVCHGKRLPLTLFPSANLRGRHPGGERTCPS WVVVLYRKNRSLAAPRGPGLVKAPVWWPMKDNPGTTTASTAKTRTRPLEQKLISEE

 Tel: 1-631-559-9269 1-516-512-3133

 Email: info@creative-biomart.com  Fax: 1-631-938-8127

 45-1 Ramsey Road, Shirley, NY 11967, USA

DLAANDILDYKDDDDKV

Purity > 80% as determined by SDS-PAGE and Coomassie blue staining.

Stability Stable for 12 months from the date of receipt of the product under proper storage and handling conditions. Avoid repeated freeze-thaw cycles.

Storage Store at -80 centigrade.

Concentration >50 ug/mL as determined by microplate BCA method.

Preparation Recombinant protein was captured through anti-DDK affinity column followed by conventional chromatography steps.

Full Length Full L.

GENE INFORMATION

Gene Name [FHL1 four and a half LIM domains 1 \[Homo sapiens \(human\) \]](#)

Official Symbol [FHL1](#)

Synonyms KYOT; SLIM; FCMSU; FHL-1; FHL1A; FHL1B; FLH1A; SLIM1; XMPMA; RBMX1A; RBMX1B; SLIM-1; SLIMMER

Gene ID [2273](#)

mRNA Refseq [NM_001449.5](#)

Protein Refseq [NP_001440.2](#)

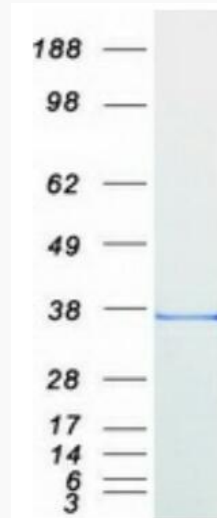
 Tel: 1-631-559-9269 1-516-512-3133

 Email: info@creative-biomart.com  Fax: 1-631-938-8127

 45-1 Ramsey Road, Shirley, NY 11967, USA

MIM 300163

UniProt ID Q13642



Coomassie blue staining of purified FHL1 protein.

 Tel: 1-631-559-9269 1-516-512-3133

 Email: info@creative-biomart.com  Fax: 1-631-938-8127

 45-1 Ramsey Road, Shirley, NY 11967, USA