

Recombinant Human FK506 Binding Protein 2, 13kDa, His-tagged

Cat. No. FKBP2-2033H **Lot. No.** (See product label)

SPECIFICATION

Product Overview	Recombinant human FKBP2 protein was expressed in E.coli and purified by using conventional chromatography techniques. MW=13.4 kDa (122aa).
Species	Human
Source	E.coli
Description	FKBP2 is peptidyl proline isomerase enzyme and a member of the immunophilin protein family. This protein is predominantly expressed in thymus and T cells and plays a role in immunoregulation and basic cellular processes involving protein folding and trafficking. It is a cis-trans prolyl isomerase that binds the immunosuppressants FK506 and rapamycin. FKBP2 is thought to function as an ER chaperone and may also act as a component of membrane cytoskeletal scaffolds.
Sequences Of Amino Acids	MATGAEGKRK LQIGVKKRVD HCPIKSRKGD VLHMHYTGKL EDGTEFDSSL PQNQPFVFSL GTGQVIKGWD QLLGMCEGE KRKLVIPSEL GYGERGAPPK IPGGATLVFE VELLKIERRT EL.
Purity	> 90% by SDS-PAGE.
Concentration	1 mg/ml (determined by Bradford assay).
Form	Liquid. In 20mM Tris buffer(pH 8.0) containing 10% glycerol, 1mM DTT.

 Tel: 1-631-559-9269 1-516-512-3133

 Email: info@creative-biomart.com  Fax: 1-631-938-8127

 45-1 Ramsey Road, Shirley, NY 11967, USA

Biological activity Specific activity is > 270 nmoles/min/mg, and is defined as the amount of enzyme that cleaves 1umole of suc-AAFP-pNA per minute at 25°C in Tris-Hcl pH8.0 using chymotrypsin.

Activity Assay 1. Prepare 170ul assay buffer into a suitable container and pre-chill on ice before use: The final concentrations are 200 mM Tris-Hcl, pH 8.0, and 20nM chymotrypsin.2. Add 10ul of recombinant FKBP2 protein with 1ug in assay buffer.3. Mix by inversion and equilibrate to 1°C and monitor the A405nm until the value is constant using a spectrophotometer.4. Add 20ul pre-chilled 5mM suc-AAFP-pNA. (Substrate was dissolved in TFE that contained 460mM LiCl to a concentration of 3 mM)5. Record the increase in A405 nm for 30 minutes at 25°C.

Storage Can be stored at +4°C short term (1-2 weeks). For long term storage, aliquot and store at -20°C or -70°C. Avoid repeated freezing and thawing cycles.

GENE INFORMATION

Gene Name FKBP2 FK506 binding protein 2, 13kDa [Homo sapiens]

Synonyms FKBP2; FK506 binding protein 2, 13kDa; PPIase; FKBP-13; FKBP2; peptidyl-prolyl cis-trans isomerase FKBP2; FKBP-2; rotamase; 13 kDa FKBP; PPIase FKBP2; proline isomerase; immunophilin FKBP13; rapamycin-binding protein; 13 kDa FK506-binding protein; EC 5.2.1.8; FK506-binding protein 2; Rotamase; Immunophilin FKBP13; 13 kDa FK506-binding protein; Peptidyl-prolyl cis-trans isomerase; rapamycin-binding protein

Gene ID 2286

mRNA Refseq NM_001135208

Protein Refseq NP_001128680

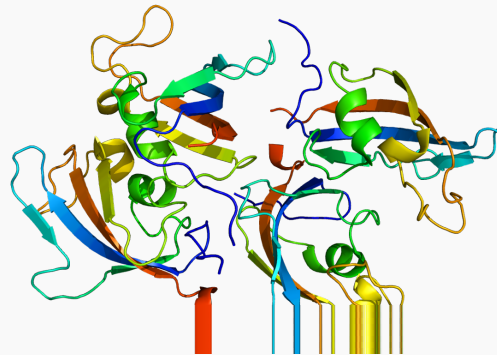
 Tel: 1-631-559-9269 1-516-512-3133

 Email: info@creative-biomart.com  Fax: 1-631-938-8127

 45-1 Ramsey Road, Shirley, NY 11967, USA

MIM	186946
UniProt ID	P26885
Chromosome Location	11q13.1-q13.3
Function	FK506 binding; isomerase activity; peptidyl-prolyl cis-trans isomerase activity; protein binding

PDB rendering based on 2pbc.



 Tel: 1-631-559-9269 1-516-512-3133

 Email: info@creative-biomart.com  Fax: 1-631-938-8127

 45-1 Ramsey Road, Shirley, NY 11967, USA