

Recombinant Human FKBP2 Protein (Ala22-Leu142), C-His tagged

Cat. No. FKBP2-2752H Lot. No. (See product label)

SPECIFICATION

Product Overview	Recombinant human FKBP2 (Ala22-Leu142) protein fused with the C-terminal His tag was expressed in Mammalian cells.
Species	Human
Source	Mammalian Cells
ProteinLength	Ala22-Leu142
Molecular Mass	13.31 kDa
Purity	>90 % as determined by SDS-PAGE.
Notes	For research use only.
Storage	Use a manual defrost freezer and avoid repeated freeze thaw cycles. Store at 2 to 8 centigrade for one week. Store at -20 to -80 centigrade for twelve months from the date of receipt.
Storage Buffer	Supplied as solution form in PBS or lyophilized from PBS.
Reconstitution	Reconstitute in sterile water for a stock solution.
Shipping	In general, proteins are provided as lyophilized powder/frozen liquid. They are

 Tel: 1-631-559-9269 1-516-512-3133

 Email: info@creative-biomart.com  Fax: 1-631-938-8127

 45-1 Ramsey Road, Shirley, NY 11967, USA

shipped out with dry ice/blue ice unless customers require otherwise.

GENE INFORMATION

Gene Name [FKBP2 FK506 binding protein 2, 13kDa \[Homo sapiens \(human\) \]](#)

Official Symbol [FKBP2](#)

Synonyms FKBP2; FK506 binding protein 2, 13kDa; FK506 binding protein 2 (13kD); peptidyl-prolyl cis-trans isomerase FKBP2; FKBP 13; peptidyl prolyl cis trans isomerase; PPIase; proline isomerase; rapamycin binding protein; FKBP-2; rotamase; 13 kDa FKBP; PPIase FKBP2; immunophilin FKBP13; rapamycin-binding protein; 13 kDa FK506-binding protein; FK506-binding protein 2 (13kD); FKBP-13;

Gene ID [2286](#)

mRNA Refseq [NM_001135208](#)

Protein Refseq [NP_001128680](#)

MIM [186946](#)

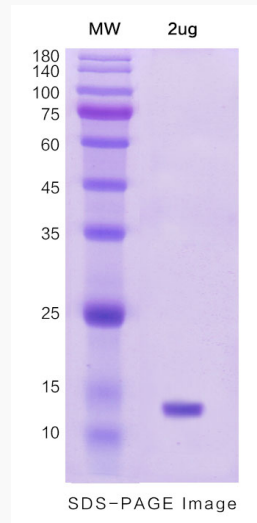
UniProt ID [P26885](#)

 Tel: 1-631-559-9269 1-516-512-3133

 Email: info@creative-biomart.com  Fax: 1-631-938-8127

 45-1 Ramsey Road, Shirley, NY 11967, USA

SDS-PAGE



 Tel: 1-631-559-9269 1-516-512-3133

 Email: info@creative-biomart.com  Fax: 1-631-938-8127

 45-1 Ramsey Road, Shirley, NY 11967, USA