

Recombinant Human FKBP2 Protein, Myc/DDK-tagged, C13 and N15-labeled

Cat. No. FKBP2-3477H Lot. No. (See product label)

SPECIFICATION

Product Overview

FKBP2 MS Standard C13 and N15-labeled recombinant protein (NP_001128680) with a C-terminal MYC/DDK tag, was expressed in HEK293 cells.

Species

Human

Source

HEK293

Description

The protein encoded by this gene is a member of the immunophilin protein family, which play a role in immunoregulation and basic cellular processes involving protein folding and trafficking. This encoded protein is a cis-trans prolyl isomerase that binds the immunosuppressants FK506 and rapamycin. It is thought to function as an ER chaperone and may also act as a component of membrane cytoskeletal scaffolds. Multiple alternatively spliced variants, encoding the same protein, have been identified.

Molecular Mass

15.6 kDa

AA Sequence

MRLSWFRVLTVLSICLSAVATATGAEGKRKLQIGVKKRVDHCPIKSRKGDVLMHMYT
GKLEDGTEFDSSLPQNQPFVFSLGTGQVIKQWDQGLLMCEGEKRKLVIPSELGYG
ERGAPPKIPGGATLVFEVELLKIERRTELTRTRPLEQKLISEEDLAANDILDYKDDDDK
V

Purity

> 80% as determined by SDS-PAGE and Coomassie blue staining

 Tel: 1-631-559-9269 1-516-512-3133

 Email: info@creative-biomart.com  Fax: 1-631-938-8127

 45-1 Ramsey Road, Shirley, NY 11967, USA

Stability	Stable for 3 months from receipt of products under proper storage and handling conditions.
Storage	Store at -80 centigrade. Avoid repeated freeze-thaw cycles.
Concentration	50 µg/mL as determined by BCA
Storage Buffer	100 mM glycine, 25 mM Tris-HCl, pH 7.3.

GENE INFORMATION

Gene Name	FKBP2 FKBP prolyl isomerase 2 [Homo sapiens (human)]
Official Symbol	FKBP2
Synonyms	FKBP2; FK506 binding protein 2, 13kDa; FK506 binding protein 2 (13kD); peptidyl-prolyl cis-trans isomerase FKBP2; FKBP 13; peptidyl prolyl cis trans isomerase; PPlase; proline isomerase; rapamycin binding protein; FKBP-2; rotamase; 13 kDa FKBP; PPlase FKBP2; immunophilin FKBP13; rapamycin-binding protein; 13 kDa FK506-binding protein; FK506-binding protein 2 (13kD); FKBP-13;
Gene ID	2286
mRNA Refseq	NM_001135208
Protein Refseq	NP_001128680
MIM	186946
UniProt ID	P26885

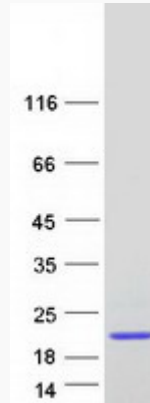
 Tel: 1-631-559-9269 1-516-512-3133

 Email: info@creative-biomart.com  Fax: 1-631-938-8127

 45-1 Ramsey Road, Shirley, NY 11967, USA



SDS-PAGE



Tel: 1-631-559-9269 1-516-512-3133

Email: info@creative-biomart.com Fax: 1-631-938-8127

45-1 Ramsey Road, Shirley, NY 11967, USA