

Recombinant Human FKBP2 Protein, GST-tagged

Cat. No. FKBP2-4188H Lot. No. (See product label)

SPECIFICATION

Product Overview	Human FKBP2 full-length ORF (NP_004461.2, 1 a.a. - 142 a.a.) recombinant protein with GST-tag at N-terminal.
Species	Human
Source	Wheat Germ
Description	The protein encoded by this gene is a member of the immunophilin protein family, which play a role in immunoregulation and basic cellular processes involving protein folding and trafficking. This encoded protein is a cis-trans prolyl isomerase that binds the immunosuppressants FK506 and rapamycin. It is thought to function as an ER chaperone and may also act as a component of membrane cytoskeletal scaffolds. Multiple alternatively spliced variants, encoding the same protein, have been identified. [provided by RefSeq]
Molecular Mass	42 kDa
AA Sequence	MRLSWFRVLTVLSICLSAVATATGAEGKRKRLQIGVKKRVDHCPIKSRKGDVLHMHYT GKLEDGTEFDSSLPQNQPFVFSLGTGQVIKQWDQGLLMCEGEKRKLVIPSELGYG ERGAPPKIPGGATLVFEVELLKIERRTEL
Applications	Enzyme-linked Immunoabsorbent Assay Western Blot (Recombinant protein) Antibody Production Protein Array

 Tel: 1-631-559-9269 1-516-512-3133

 Email: info@creative-biomart.com  Fax: 1-631-938-8127

 45-1 Ramsey Road, Shirley, NY 11967, USA

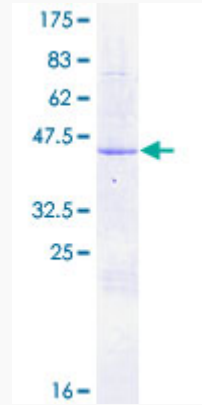
Notes	Best use within three months from the date of receipt of this protein.
Storage	Store at -80 centigrade. Aliquot to avoid repeated freezing and thawing.
Storage Buffer	50 mM Tris-HCl, 10 mM reduced Glutathione, pH=8.0 in the elution buffer.
GENE INFORMATION	
Gene Name	FKBP2 FK506 binding protein 2, 13kDa [Homo sapiens]
Official Symbol	FKBP2
Synonyms	FKBP2; FK506 binding protein 2, 13kDa; FK506 binding protein 2 (13kD); peptidyl-prolyl cis-trans isomerase FKBP2; FKBP 13; peptidyl prolyl cis trans isomerase; PPlase; proline isomerase; rapamycin binding protein; FKBP-2; rotamase; 13 kDa FKBP; PPlase FKBP2; immunophilin FKBP13; rapamycin-binding protein; 13 kDa FK506-binding protein; FK506-binding protein 2 (13kD); FKBP-13;
Gene ID	2286
mRNA Refseq	NM_001135208
Protein Refseq	NP_001128680
MIM	186946
UniProt ID	P26885

 Tel: 1-631-559-9269 1-516-512-3133

 Email: info@creative-biomart.com  Fax: 1-631-938-8127

 45-1 Ramsey Road, Shirley, NY 11967, USA

**Quality Control
Testing**



12.5% SDS-PAGE Stained with Coomassie Blue.

 Tel: 1-631-559-9269 1-516-512-3133

 Email: info@creative-biomart.com  Fax: 1-631-938-8127

 45-1 Ramsey Road, Shirley, NY 11967, USA