

Recombinant Human FLG protein, His-tagged

Cat. No. FLG-1230H **Lot. No.** (See product label)

SPECIFICATION

Product Overview	Recombinant Human FLG protein(3838-4061aa), fused to His-tag at the N-terminus, was expressed in Yeast.
Species	Human
Source	Yeast
ProteinLength	3838-4061aa
Description	The protein encoded by this gene is an intermediate filament-associated protein that aggregates keratin intermediate filaments in mammalian epidermis. It is initially synthesized as a polyprotein precursor, profilaggrin (consisting of multiple filaggrin units of 324 aa each), which is localized in keratohyalin granules, and is subsequently proteolytically processed into individual functional filaggrin molecules. Mutations in this gene are associated with ichthyosis vulgaris.
Form	If the delivery form is liquid, the default storage buffer is Tris/PBS-based buffer, 5%-50% glycerol. If the delivery form is lyophilized powder, the buffer before lyophilization is Tris/PBS-based buffer, 6% Trehalose, pH 8.0.
Molecular Mass	26.8 kDa
AA Sequence	DSSRHSQSQGESAGSRRSRRQGSSVSQDSDSEAYPEDSERRSESASRNHHGSS REQSRDGSRHPGSSHRDTASHVQSSPVQSDSSTAKEHGHFSSLSQDSAYHSGIQS

 Tel: 1-631-559-9269 1-516-512-3133

 Email: info@creative-biomart.com  Fax: 1-631-938-8127

 45-1 Ramsey Road, Shirley, NY 11967, USA

RGSPHSSSSYHYQSEGTERQKGQSGLVWRHGSYGSADYDYGESGFRHSQHGSV
SYNSNPVVKERSDICKASAFGKDHPRYATYINKDPGLCGHSSDISKQLGFSQSQR
YYYYE

Purity Greater than 90% as determined by SDS-PAGE.

Storage Store at -20 centigrade upon receipt, aliquoting is necessary for multiple use. Avoid repeated freeze-thaw cycles. Repeated freezing and thawing is not recommended. Store working aliquots at 4 centigrade for up to one week.

Expiry The shelf life is related to many factors, storage state, buffer ingredients, storage temperature and the stability of the protein itself. Generally, the shelf life of liquid form is 6 months at -20/-80 centigrade. The shelf life of lyophilized form is 12 months at -20/-80 centigrade.

Reconstitution We recommend that this vial be briefly centrifuged prior to opening to bring the contents to the bottom. Please reconstitute protein in deionized sterile water to a concentration of 0.1-1.0 mg/mL. We recommend to add 5-50% of glycerol (final concentration) and aliquot for long-term storage at -20/-80 centigrade. Our default final concentration of glycerol is 50%. Customers could use it as reference.

GENE INFORMATION

Gene Name [FLG](#)

Official Symbol [FLG](#)

Synonyms [ATOD2](#)

Gene ID [2312](#)

 Tel: 1-631-559-9269 1-516-512-3133

 Email: info@creative-biomart.com  Fax: 1-631-938-8127

 45-1 Ramsey Road, Shirley, NY 11967, USA

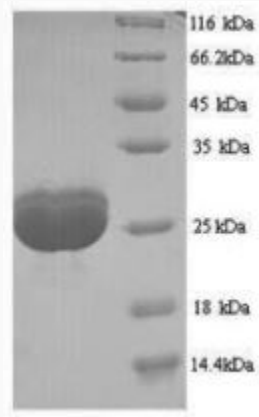
mRNA Refseq [NM_002016.2](#)

Protein Refseq [NP_002007.1](#)

MIM [135940](#)

UniProt ID [P20930](#)

SDS-PAGE of FLG-1230H



(Tris-Glycine gel) Discontinuous SDS-PAGE (reduced) with 5% enrichment gel and 15% separation gel.

 Tel: 1-631-559-9269 1-516-512-3133

 Email: info@creative-biomart.com  Fax: 1-631-938-8127

 45-1 Ramsey Road, Shirley, NY 11967, USA