

Recombinant Human FLG protein, His-tagged

Cat. No. FLG-4554H **Lot. No.** (See product label)

SPECIFICATION

Product Overview	Recombinant Human FLG protein(P20930)(1-300 aa), fused with C-terminal His tag, was expressed in E.coli.
Species	Human
Source	E.coli
ProteinLength	1-300 aa
Form	For liquid formulations, the standard storage buffer consists of a Tris or PBS based solution supplemented with 5-50% glycerol. When provided as lyophilized powder, the product undergoes freeze-drying from a Tris- or PBS-based formulation containing 6% trehalose, adjusted to pH 8.0 prior to the lyophilization process.
Molecular Mass	42.5 kDa
AASequence	MSTLLENIFAIINLFKQYSKKDKNTDTLSKKELKELLEKEFRQILKNPDDPDMVDVFM HLDIDHNKKIDFTEFLLMVFKLAQAYYESTRKENLPISGHKHRKHSHHDKHEDNKQE ENKENRKRPSSELRNRRKGNKGRSKSPRETGGKRHESSEKKERKGYSPHREE EYGKNHHNSSKKEKNKTENTRLGDNRKRLSERLEEKEDNEEGVYDYENTGRMTQK WIQSGHIATYYTIQDEAYDTTDSLLEENKIYERSRSSDGKSSSQVNRSRHENTSQVP LQESRTRKRRGSRVSQD
Purity	Greater than 85% as determined by SDS-PAGE.

 Tel: 1-631-559-9269 1-516-512-3133

 Email: info@creative-biomart.com  Fax: 1-631-938-8127

 45-1 Ramsey Road, Shirley, NY 11967, USA

Storage Store at -20°C/-80°C upon receipt, aliquoting is necessary for multiple use. Avoid repeated freeze-thaw cycles.

Reconstitution Please reconstitute protein in deionized sterile water to a concentration of 0.1-1.0 mg/mL. Aliquot for long-term storage at -80°C.

GENE INFORMATION

Gene Name FLG filaggrin [Homo sapiens]

Official Symbol FLG

Synonyms FLG; filaggrin; epidermal filaggrin; ATOD2;

Gene ID 2312

mRNA Refseq NM_002016

Protein Refseq NP_002007

MIM 135940

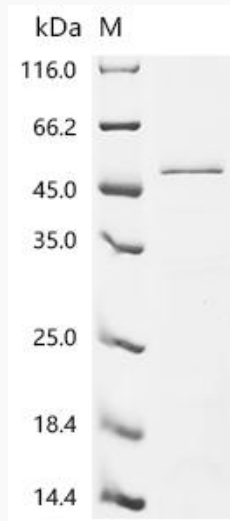
UniProt ID P20930

 Tel: 1-631-559-9269 1-516-512-3133

 Email: info@creative-biomart.com  Fax: 1-631-938-8127

 45-1 Ramsey Road, Shirley, NY 11967, USA

SDS-PAGE



 Tel: 1-631-559-9269 1-516-512-3133

 Email: info@creative-biomart.com  Fax: 1-631-938-8127

 45-1 Ramsey Road, Shirley, NY 11967, USA