

Recombinant Salmonella Enterica I FLJB Protein (1-503 aa)

Cat. No. FLJB-2482S Lot. No. (See product label)

SPECIFICATION

Product Overview	Recombinant Salmonella Enterica I FLJB Protein (1-503 aa) is produced by E. coli expression system. Protein Description: Full Length.
Species	Salmonella Enterica I
Source	E.coli
ProteinLength	1-503 aa
Description	Flagellin is the subunit protein which polymerizes to form the filaments of bacterial flagella.
Form	Tris-based buffer,50% glycerol
Molecular Mass	52.3 kDa
AA Sequence	<p>MAQVINTNSLSLLTQNNLNKSQSALGTAIERLSSGLRINSAKDDAAGQAIANRFTANIK GLTQASRNANDGISIAQTTEGALNEINNNLQRVRELAVQSANSTNSQSDLDSIQAEIT QRLNEIDRVSGQTQFNGVKVLAQDNTLTIQVGANDGETIDIDLKQINSQTLGLDSLNV QKAYDVSATDVISSTYS DGTQALTAPTATEIKAALGNPTVTGDTLTATVSFKDGGKYYA TVGGYTDAGDTAKNGKYEVTVDSATGAVSFGATPTKSTVTGDTAVTKVQVNAPVPV AADAATKKALQDGGVSSADASAATLVKMSYTDKNGKTIEGGYALKAGDKYYAADYD EATGAIKAKTTSYTAADGTTKTAANQLGGVDGKTEVVTIDGKTYNASKAAGHDFKAQ PELAEAAAKTTENPLQKIDAALAQVDALRSDLGAVQNRFNSAITNLGNTVNNLSEAR SRIEDSDYATEVSNMSRAQILQQAGTSVLAQANQVPQNVLSLLR</p>

 Tel: 1-631-559-9269 1-516-512-3133

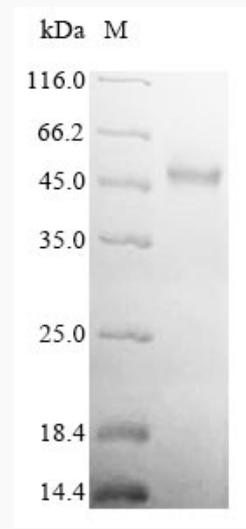
 Email: info@creative-biomart.com  Fax: 1-631-938-8127

 45-1 Ramsey Road, Shirley, NY 11967, USA

Purity	> 90% as determined by SDS-PAGE.
Notes	Repeated freezing and thawing is not recommended. Store working aliquots at 4 centigrade for up to one week.
Storage	The shelf life is related to many factors, storage state, buffer ingredients, storage temperature and the stability of the protein itself. Generally, the shelf life of liquid form is 6 months at -20 centigrade/-80 centigrade. The shelf life of lyophilized form is 12 months at -20 centigrade/-80 centigrade.
Concentration	A hardcopy of COA will be sent along with the products. Please refer to it for detailed information.

GENE INFORMATION

Synonyms	fliJ;
UniProt ID	E7CIA8





(Tris-Glycine gel) Discontinuous SDS-PAGE (reduced) with 5% enrichment gel and 15% separation gel.

 Tel: 1-631-559-9269 1-516-512-3133

 Email: info@creative-biomart.com  Fax: 1-631-938-8127

 45-1 Ramsey Road, Shirley, NY 11967, USA