

## Recombinant Human FLNB Protein, GST-tagged

**Cat. No.** FLNB-4358H    **Lot. No.** (See product label)

### SPECIFICATION

<b>Product Overview</b>	Human FLNB partial ORF ( NP_001448, 2503 a.a. - 2602 a.a.) recombinant protein with GST-tag at N-terminal.
<b>Species</b>	Human
<b>Source</b>	Wheat Germ
<b>Description</b>	This gene encodes a member of the filamin family. The encoded protein interacts with glycoprotein Ib alpha as part of the process to repair vascular injuries. The platelet glycoprotein Ib complex includes glycoprotein Ib alpha, and it binds the actin cytoskeleton. Mutations in this gene have been found in several conditions: atelosteogenesis type 1 and type 3; boomerang dysplasia; autosomal dominant Larsen syndrome; and spondylocarpotarsal synostosis syndrome. Multiple alternatively spliced transcript variants that encode different protein isoforms have been described for this gene. [provided by RefSeq, Nov 2009]
<b>Molecular Mass</b>	36.74 kDa
<b>AA Sequence</b>	SAIPKASSDASKVTSKGAGLSKAFVGQKSSFLVDCSKAGSNMLLIGVHGPTTPCEEV SMKHVGNQQYNVTYVVKERGDYVLAVKWGEEHIPGSPFHVTVP
<b>Applications</b>	Enzyme-linked Immunoabsorbent Assay Western Blot (Recombinant protein) Antibody Production Protein Array

 Tel: 1-631-559-9269    1-516-512-3133

 Email: [info@creative-biomart.com](mailto:info@creative-biomart.com)     Fax: 1-631-938-8127

 45-1 Ramsey Road, Shirley, NY 11967, USA

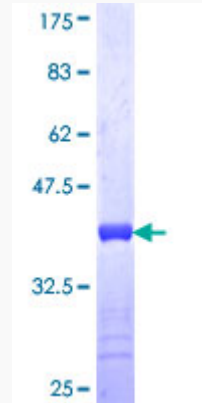
<b>Notes</b>	Best use within three months from the date of receipt of this protein.
<b>Storage</b>	Store at -80 centigrade. Aliquot to avoid repeated freezing and thawing.
<b>Storage Buffer</b>	50 mM Tris-HCl, 10 mM reduced Glutathione, pH=8.0 in the elution buffer.
<b>GENE INFORMATION</b>	
<b>Gene Name</b>	FLNB filamin B, beta [ Homo sapiens ]
<b>Official Symbol</b>	FLNB
<b>Synonyms</b>	FLNB; filamin B, beta; filamin B, beta (actin binding protein 278), FLN1L, Larsen syndrome 1 (autosomal dominant), LRS1; filamin-B; ABP 278; actin binding protein 278; FH1; TABP; TAP; filamin-3; beta-filamin; ABP-280 homolog; filamin homolog 1; thyroid autoantigen; actin-binding-like protein; Larsen syndrome 1 (autosomal dominant); AOI; SCT; LRS1; FLN-B; FLN1L; ABP-278; ABP-280; DKFZp686O033; DKFZp686A1668;
<b>Gene ID</b>	2317
<b>mRNA Refseq</b>	NM_001164317
<b>Protein Refseq</b>	NP_001157789
<b>MIM</b>	603381
<b>UniProt ID</b>	O75369

 Tel: 1-631-559-9269 1-516-512-3133

 Email: [info@creative-biomart.com](mailto:info@creative-biomart.com)  Fax: 1-631-938-8127

 45-1 Ramsey Road, Shirley, NY 11967, USA

**Quality Control  
Testing**



12.5% SDS-PAGE Stained with Coomassie Blue.

 Tel: 1-631-559-9269 1-516-512-3133

 Email: [info@creative-biomart.com](mailto:info@creative-biomart.com)  Fax: 1-631-938-8127

 45-1 Ramsey Road, Shirley, NY 11967, USA