

## Recombinant Human FLNC Protein (Glu17-Lys259), N-His tagged

**Cat. No.** FLNC-2725H    **Lot. No.** (See product label)

### SPECIFICATION

|                         |   |
|-------------------------|---|
| <b>Product Overview</b> | Recombinant human FLNC (Glu17-Lys259) protein fused with the N-His tag was expressed in E. coli.  |
| <b>Species</b>          | Human   |
| <b>Source</b>           | E.coli  |
| <b>ProteinLength</b>    | Glu17-Lys259  |
| <b>Molecular Mass</b>   | 30.51 kDa   |
| <b>Purity</b>           | >90 % as determined by SDS-PAGE.  |
| <b>Notes</b>            | For research use only.  |
| <b>Storage</b>          | Use a manual defrost freezer and avoid repeated freeze thaw cycles. Store at 2 to 8 centigrade for one week. Store at -20 to -80 centigrade for twelve months from the date of receipt. |
| <b>Storage Buffer</b>   | 0.01M PBS, pH 7.4, 0.02 % NLS   |
| <b>Reconstitution</b>   | Reconstitute in sterile water for a stock solution.   |
| <b>Shipping</b>         | In general, proteins are provided as lyophilized powder/frozen liquid. They are   |

 Tel: 1-631-559-9269    1-516-512-3133

 Email: [info@creative-biomart.com](mailto:info@creative-biomart.com)     Fax: 1-631-938-8127

 45-1 Ramsey Road, Shirley, NY 11967, USA

shipped out with dry ice/blue ice unless customers require otherwise.

## GENE INFORMATION

**Gene Name** FLNC filamin C, gamma [ Homo sapiens (human) ]

**Official Symbol** FLNC

**Synonyms** FLNC; filamin C, gamma; filamin C, gamma (actin binding protein 280), FLN2; filamin-C; ABP 280; ABPL; actin binding protein 280; FLN-C; filamin 2; filamin-2; ABP-280-like protein; ABP-L, gamma filamin; actin-binding-like protein; ABPA; FLN2; MFM5; MPD4; ABP-280; ABP280A; FLJ10186;

**Gene ID** 2318

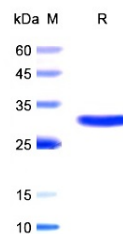
**mRNA Refseq** NM\_001127487

**Protein Refseq** NP\_001120959

**MIM** 102565

**UniProt ID** Q14315

## SDS-PAGE



Tel: 1-631-559-9269 1-516-512-3133

Email: [info@creative-biomart.com](mailto:info@creative-biomart.com) Fax: 1-631-938-8127

45-1 Ramsey Road, Shirley, NY 11967, USA