

Recombinant Human FLNC Protein, GST-tagged

Cat. No. FLNC-4359H **Lot. No.** (See product label)

SPECIFICATION

Product Overview	Human FLNC partial ORF (NP_001449.3, 2606 a.a. - 2705 a.a.) recombinant protein with GST-tag at N-terminal.
Species	Human
Source	Wheat Germ
Description	This gene encodes one of three related filamin genes, specifically gamma filamin. These filamin proteins crosslink actin filaments into orthogonal networks in cortical cytoplasm and participate in the anchoring of membrane proteins for the actin cytoskeleton. Three functional domains exist in filamin: an N-terminal filamentous actin-binding domain, a C-terminal self-association domain, and a membrane glycoprotein-binding domain. Two transcript variants encoding different isoforms have been found for this gene. [provided by RefSeq]
Molecular Mass	36.63 kDa
AA Sequence	SSIPKFSSDASKVVTRGPGLSQAFVVGQKNSFTVDCSKAGTNMMMVGVHGPKTPCE EVYVKHMGNRVYNVTYTVKEKGDYILIVKWGDESVPGSPFKVKVP
Applications	Enzyme-linked Immunoabsorbent Assay Western Blot (Recombinant protein) Antibody Production Protein Array

 Tel: 1-631-559-9269 1-516-512-3133

 Email: info@creative-biomart.com  Fax: 1-631-938-8127

 45-1 Ramsey Road, Shirley, NY 11967, USA

Notes	Best use within three months from the date of receipt of this protein.
Storage	Store at -80 centigrade. Aliquot to avoid repeated freezing and thawing.
Storage Buffer	50 mM Tris-HCl, 10 mM reduced Glutathione, pH=8.0 in the elution buffer.

GENE INFORMATION

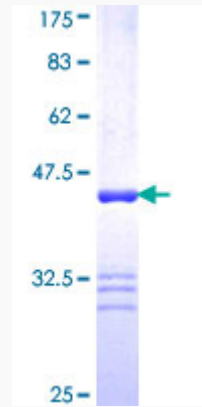
Gene Name	FLNC filamin C, gamma [Homo sapiens]
Official Symbol	FLNC
Synonyms	FLNC; filamin C, gamma; filamin C, gamma (actin binding protein 280), FLN2; filamin-C; ABP 280; ABPL; actin binding protein 280; FLN-C; filamin 2; filamin-2; ABP-280-like protein; ABP-L, gamma filamin; actin-binding-like protein; ABPA; FLN2; MFM5; MPD4; ABP-280; ABP280A; FLJ10186;
Gene ID	2318
mRNA Refseq	NM_001127487
Protein Refseq	NP_001120959
MIM	102565
UniProt ID	Q14315

 Tel: 1-631-559-9269 1-516-512-3133

 Email: info@creative-biomart.com  Fax: 1-631-938-8127

 45-1 Ramsey Road, Shirley, NY 11967, USA

**Quality Control
Testing**



12.5% SDS-PAGE Stained with Coomassie Blue.

 Tel: 1-631-559-9269 1-516-512-3133

 Email: info@creative-biomart.com  Fax: 1-631-938-8127

 45-1 Ramsey Road, Shirley, NY 11967, USA