

Recombinant Human FLOT2 Protein, His-tagged

Cat. No. FLOT2-1506H Lot. No. (See product label)

SPECIFICATION

Product Overview	Recombinant Human FLOT2 Protein (Ala35-Asp379) with N-His tag was expressed in E. coli.
Species	Human
Source	E.coli
ProteinLength	Ala35-Asp379
Description	Caveolae are small domains on the inner cell membrane involved in vesicular trafficking and signal transduction. This gene encodes a caveolae-associated, integral membrane protein, which is thought to function in neuronal signaling.
Form	Freeze-dried powder
Molecular Mass	Predicted Molecular Mass: 42.1 kDa Accurate Molecular Mass: 44 kDa
Purity	> 90%
Applications	Positive Control; Immunogen; SDS-PAGE; WB.
Stability	The thermal stability is described by the loss rate. The loss rate was determined by accelerated thermal degradation test, that is, incubate the protein at 37 centigrade for 48h, and no obvious degradation and precipitation were observed. The loss rate is

 Tel: 1-631-559-9269 1-516-512-3133

 Email: info@creative-biomart.com  Fax: 1-631-938-8127

 45-1 Ramsey Road, Shirley, NY 11967, USA

less than 5% within the expiration date under appropriate storage condition.

Storage

Avoid repeated freeze/thaw cycles. Store at 2-8 centigrade for one month. Aliquot and store at -80 centigrade for 12 months.

Storage Buffer

20mM Tris, 150mM NaCl, pH8.0, containing 1mM EDTA, 1mM DTT, 0.01% SKL, 5% Trehalose and Proclin300.

Reconstitution

Reconstitute in 20mM Tris, 150mM NaCl (pH8.0) to a concentration of 0.1-1.0 mg/mL. Do not vortex.

GENE INFORMATION

Gene Name

[FLOT2](#) [flotillin 2 \[Homo sapiens \(human\) \]](#)

Official Symbol

[FLOT2](#)

Synonyms

FLOT2; flotillin 2; M17S1; flotillin-2; ECS 1; ECS1; ESA; ESA1; Flotillin 2 (epidermal surface antigen 1); membrane component; chromosome 17; surface marker 1 (35kD protein identified by monoclonal ECS 1); epidermal surface antigen; membrane component chromosome 17 surface marker 1; membrane component, chromosome 17, surface marker 1 (35kD protein identified by monoclonal ECS-1); ECS-1;

Gene ID

[2319](#)

mRNA Refseq

[NM_004475](#)

Protein Refseq

[NP_004466](#)

MIM

[131560](#)

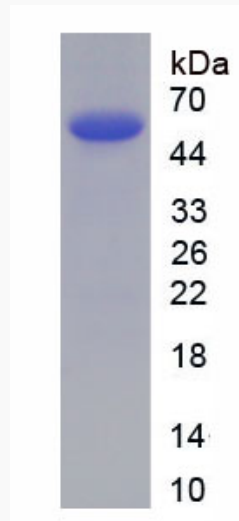
 Tel: 1-631-559-9269 1-516-512-3133

 Email: info@creative-biomart.com  Fax: 1-631-938-8127

 45-1 Ramsey Road, Shirley, NY 11967, USA

UniProt ID

Q14254



 Tel: 1-631-559-9269 1-516-512-3133

 Email: info@creative-biomart.com  Fax: 1-631-938-8127

 45-1 Ramsey Road, Shirley, NY 11967, USA