

# Recombinant Full Length Human FLOT2 Protein, C-Flag-tagged

Cat. No. FLOT2-1555HFL Lot. No. (See product label)

## SPECIFICATION

### Product Overview

Recombinant Full Length Human FLOT2 Protein, fused to Flag-tag at C-terminus, was expressed in Mammalian cells.

### Species

Human

### Source

Mammalian Cells

### Description

Caveolae are small domains on the inner cell membrane involved in vesicular trafficking and signal transduction. This gene encodes a caveolae-associated, integral membrane protein, which is thought to function in neuronal signaling.

### Form

25 mM Tris HCl, pH 7.3, 100 mM glycine, 10% glycerol.

### Molecular Mass

46.9 kDa

### AA Sequence

MGNCHTVGPNEALVVSGGCCGSDYKQYVFGGWAWAWWCISDTQRISLEIMTLQP  
 RCEDVETAEGVALTVT GVAQVKIMTEKELLAVACEQFLGKNVQDIKNNVLQTLEGHL  
 RSILGTLTVEQIYQDRDQFAKLVREVAAP DVGRMGIEILSFTIKDVYDKVDYLSSLGK  
 TQTAVVQRDADIGVAEAERDAGIREAECKKEMLDVKFMADT KIADSKRAFELQKSA  
 FSEEVNIKTAEAQLAYELQGAREQQKIRQEEIEIEVVQRKKQIAVEAQEILRTDK ELIA  
 TVRRPAEAEAHRIQQIAEGEKVKQVLLAQAEAEKIRKIGEAEEAAVIEAMGKAEARMK  
 LKAEAYQK YGDAAKMALVLEALPQIAAKIAAPLTKVDEIVVLSGDNSKVTSEVNRLLA  
 ELPASVHALTGVDLSKIPLI  
 KKATGVQVTRTRPLEQKLISEEDLAANDILDYKDDDDKV

 Tel: 1-631-559-9269 1-516-512-3133

 Email: [info@creative-biomart.com](mailto:info@creative-biomart.com)  Fax: 1-631-938-8127

 45-1 Ramsey Road, Shirley, NY 11967, USA

<b>Purity</b>	> 80% as determined by SDS-PAGE and Coomassie blue staining.
<b>Stability</b>	Stable for 12 months from the date of receipt of the product under proper storage and handling conditions. Avoid repeated freeze-thaw cycles.
<b>Storage</b>	Store at -80 centigrade.
<b>Concentration</b>	>50 ug/mL as determined by microplate BCA method.
<b>Preparation</b>	Recombinant protein was captured through anti-DDK affinity column followed by conventional chromatography steps.
<b>Protein Families</b>	Druggable Genome
<b>Protein Pathways</b>	Insulin signaling pathway
<b>Full Length</b>	Full L.

## GENE INFORMATION

<b>Gene Name</b>	<a href="#">FLOT2 flotillin 2 [ Homo sapiens (human) ]</a>
<b>Official Symbol</b>	<a href="#">FLOT2</a>
<b>Synonyms</b>	ESA; ECS1; ESA1; ECS-1; M17S1
<b>Gene ID</b>	<a href="#">2319</a>
<b>mRNA Refseq</b>	<a href="#">NM_004475.3</a>
<b>Protein Refseq</b>	<a href="#">NP_004466.2</a>

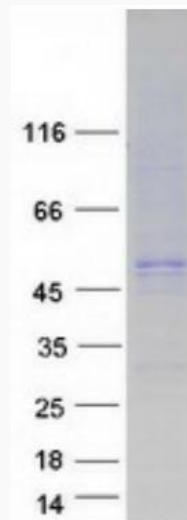
 Tel: 1-631-559-9269 1-516-512-3133

 Email: [info@creative-biomart.com](mailto:info@creative-biomart.com)  Fax: 1-631-938-8127

 45-1 Ramsey Road, Shirley, NY 11967, USA

**MIM** 131560

**UniProt ID** Q14254



Coomassie blue staining of purified FLOT2 protein.

 Tel: 1-631-559-9269 1-516-512-3133

 Email: [info@creative-biomart.com](mailto:info@creative-biomart.com)  Fax: 1-631-938-8127

 45-1 Ramsey Road, Shirley, NY 11967, USA