

Recombinant Human FLOT2 Protein, GST-tagged

Cat. No. FLOT2-4362H **Lot. No.** (See product label)

SPECIFICATION

Product Overview	Human FLOT2 full-length ORF (AAH17292, 1 a.a. - 379 a.a.) recombinant protein with GST-tag at N-terminal.
Species	Human
Source	Wheat Germ
Description	Caveolae are small domains on the inner cell membrane involved in vesicular trafficking and signal transduction. This gene encodes a caveolae-associated, integral membrane protein, which is thought to function in neuronal signaling. [provided by RefSeq]
Molecular Mass	67.43 kDa
AA Sequence	MTLQPRCEDVETAEGVALTVTGVAQVKIMTEKELLAVACEQFLGKNVQDIKNVVLQT LEGLHRSILGTLTVEQIQDRDQFAKLVREVAAPDVGRMGIEILSFTIKDVYDKVDYLS SLGKTQTAVVQRDADIGVAEAERDAGIREAECKKEMLDVKFMADTKIADSKRAFELQ KSAFSEEVNIKTAEAQLAYELQGAREQQKIRQEEIEIEVVQRKKQIAVEAQEILRTDKE LIATVRRPAEAEAHRIQQIAEGEKVKQVLLAQAEAEKIRKIGEAEEAAVIEAMGKAEER MKLKAEAYQKYGDAAKMALVLEALPQIAAKIAAPLTKVDEIVVLSGDNSKVTSEVNRL LAELPASVHALTGVDLSKIPLIKKATGVQV
Applications	Enzyme-linked Immunoabsorbent Assay Western Blot (Recombinant protein) Antibody Production

 Tel: 1-631-559-9269 1-516-512-3133

 Email: info@creative-biomart.com  Fax: 1-631-938-8127

 45-1 Ramsey Road, Shirley, NY 11967, USA

Protein Array

Notes	Best use within three months from the date of receipt of this protein.
Storage	Store at -80 centigrade. Aliquot to avoid repeated freezing and thawing.
Storage Buffer	50 mM Tris-HCl, 10 mM reduced Glutathione, pH=8.0 in the elution buffer.

GENE INFORMATION

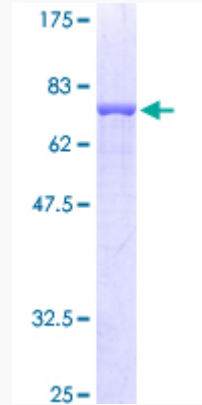
Gene Name	FLOT2 flotillin 2 [Homo sapiens]
Official Symbol	FLOT2
Synonyms	FLOT2; flotillin 2; M17S1; flotillin-2; ECS 1; ECS1; ESA; ESA1; Flotillin 2 (epidermal surface antigen 1); membrane component; chromosome 17; surface marker 1 (35kD protein identified by monoclonal ECS 1); epidermal surface antigen; membrane component chromosome 17 surface marker 1; membrane component, chromosome 17, surface marker 1 (35kD protein identified by monoclonal ECS-1); ECS-1;
Gene ID	2319
mRNA Refseq	NM_004475
Protein Refseq	NP_004466
MIM	131560
UniProt ID	Q14254

 Tel: 1-631-559-9269 1-516-512-3133

 Email: info@creative-biomart.com  Fax: 1-631-938-8127

 45-1 Ramsey Road, Shirley, NY 11967, USA

**Quality Control
Testing**



12.5% SDS-PAGE Stained with Coomassie Blue.

 Tel: 1-631-559-9269 1-516-512-3133

 Email: info@creative-biomart.com  Fax: 1-631-938-8127

 45-1 Ramsey Road, Shirley, NY 11967, USA