

# Recombinant Human FLOT2 Protein, Myc/DDK-tagged, C13 and N15-labeled

**Cat. No.** FLOT2-934H    **Lot. No.** (See product label)

## SPECIFICATION

<b>Product Overview</b>	FLOT2 MS Standard C13 and N15-labeled recombinant protein (NP_004466) with a C-terminal MYC/DDK tag, was expressed in HEK293 cells.
<b>Species</b>	Human
<b>Source</b>	HEK293
<b>Description</b>	Caveolae are small domains on the inner cell membrane involved in vesicular trafficking and signal transduction. This gene encodes a caveolae-associated, integral membrane protein, which is thought to function in neuronal signaling.
<b>Molecular Mass</b>	46.9 kDa
<b>AA Sequence</b>	<p>MGNCHTVGPNEALVVSGGCCGSDYKQYVFGGWAWAWWCISDTQRISLEIMTLQP            RCEDVETAEGVALTVTGVAQVKIMTEKELLAVACEQFLGKNVQDIKNVVLQTLEGHL            RSILGTLTVEQIYQDRDQFAKLVREVAAPDVGGRMGIEILSFTIKDVYDKVDYLSSLGKT            QTAVVQRDADIGVAEAERDAGIREAECKKEMLDVKFMADTKIADSKRAFELQKSAFS            EEVNIKTAEAYELQGAREQQKIRQEEIEIEVVQRKKQIAVEAQEILRTDKELIATV            RRPAAEAHRIQQIAEGEKVKQVLLAQAEAEKIRKIGEAAVIEAMGKAEARMKLLK            AEAYQKYGDAKMALVLEALPQIAAKIAAPLTKVDEIVVLSGDNSKVTSEVNRLLAEL            PASVHALTGVDLSKIPLIKKATGVQVTRTRPLEQKLISEEDLAANDILDYKDDDDKV</p>
<b>Purity</b>	> 80% as determined by SDS-PAGE and Coomassie blue staining

 Tel: 1-631-559-9269    1-516-512-3133

 Email: [info@creative-biomart.com](mailto:info@creative-biomart.com)     Fax: 1-631-938-8127

 45-1 Ramsey Road, Shirley, NY 11967, USA

<b>Stability</b>	Stable for 3 months from receipt of products under proper storage and handling conditions.
<b>Storage</b>	Store at -80 centigrade. Avoid repeated freeze-thaw cycles.
<b>Concentration</b>	50 µg/mL as determined by BCA
<b>Storage Buffer</b>	100 mM glycine, 25 mM Tris-HCl, pH 7.3.

## GENE INFORMATION

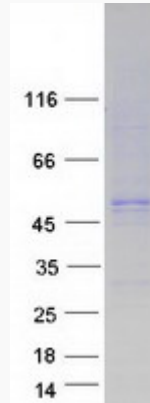
<b>Gene Name</b>	FLOT2 flotillin 2 [ Homo sapiens (human) ]
<b>Official Symbol</b>	FLOT2
<b>Synonyms</b>	FLOT2; flotillin 2; M17S1; flotillin-2; ECS 1; ECS1; ESA; ESA1; Flotillin 2 (epidermal surface antigen 1); membrane component; chromosome 17; surface marker 1 (35kD protein identified by monoclonal ECS 1); epidermal surface antigen; membrane component chromosome 17 surface marker 1; membrane component, chromosome 17, surface marker 1 (35kD protein identified by monoclonal ECS-1); ECS-1;
<b>Gene ID</b>	2319
<b>mRNA Refseq</b>	NM_004475
<b>Protein Refseq</b>	NP_004466
<b>MIM</b>	131560
<b>UniProt ID</b>	Q14254

 Tel: 1-631-559-9269 1-516-512-3133

 Email: [info@creative-biomart.com](mailto:info@creative-biomart.com)  Fax: 1-631-938-8127

 45-1 Ramsey Road, Shirley, NY 11967, USA

**SDS-PAGE**



 Tel: 1-631-559-9269 1-516-512-3133

 Email: [info@creative-biomart.com](mailto:info@creative-biomart.com)  Fax: 1-631-938-8127

 45-1 Ramsey Road, Shirley, NY 11967, USA