

Recombinant Human FLRT3 protein, His-tagged

Cat. No. FLRT3-3882H **Lot. No.** (See product label)

SPECIFICATION

Product Overview	Recombinant Human FLRT3 protein(NP_938205.1)(Met 1-Pro 528) was expressed in HEK293, fused with a polyhistidine tag at the C-terminus.
Species	Human
Source	HEK293
ProteinLength	1-528 aa
Form	Lyophilized from sterile PBS, pH 7.4.
Molecular Mass	The recombinant human FLRT3 consists of 511 amino acids and has a predicted molecular mass of 58 kDa. The apparent molecular mass of rh FLRT3 is approximately 60-70 kDa in SDS-PAGE under reducing conditions due to glycosylation.
Endotoxin	< 1.0 EU per µg of the protein as determined by the LAL method.
Purity	> 98 % as determined by SDS-PAGE
Storage	Store it under sterile conditions at -20°C to -80°C upon receiving. Recommend to aliquot the protein into smaller quantities for optimal storage. Avoid repeated freeze-thaw cycles.
Reconstitution	It is recommended that sterile water be added to the vial to prepare a stock solution of

 Tel: 1-631-559-9269 1-516-512-3133

 Email: info@creative-biomart.com  Fax: 1-631-938-8127

 45-1 Ramsey Road, Shirley, NY 11967, USA

0.2 ug/ul. Centrifuge the vial at 4°C before opening to recover the entire contents.

protein Refseq-Weblink http://www.ncbi.nlm.nih.gov/protein/NP_037413.1

Unit ID Q9NZU0

Unit ID-Weblink <https://www.uniprot.org/uniprotkb/Q9NZU0>

GENE INFORMATION

Gene Name FLRT3 fibronectin leucine rich transmembrane protein 3 [Homo sapiens]

Official Symbol FLRT3

Synonyms FLRT3; fibronectin leucine rich transmembrane protein 3; leucine-rich repeat transmembrane protein FLRT3; fibronectin-like domain-containing leucine-rich transmembrane protein 3;

Gene ID 23767

mRNA Refseq NM_013281

protein Refseq NP_037413

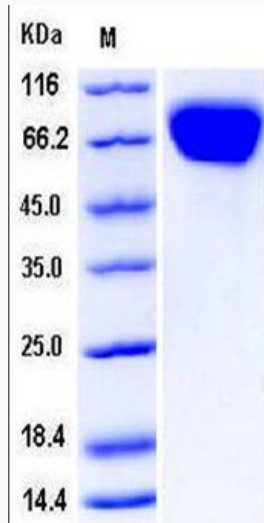
MIM 604808

 Tel: 1-631-559-9269 1-516-512-3133

 Email: info@creative-biomart.com  Fax: 1-631-938-8127

 45-1 Ramsey Road, Shirley, NY 11967, USA

SDS-PAGE



 Tel: 1-631-559-9269 1-516-512-3133

 Email: info@creative-biomart.com  Fax: 1-631-938-8127

 45-1 Ramsey Road, Shirley, NY 11967, USA