

Recombinant Full Length Human FLT1 Protein, C-Flag-tagged

Cat. No. FLT1-1576HFL Lot. No. (See product label)

SPECIFICATION

Product Overview	Recombinant Full Length Human FLT1 Protein, fused to Flag-tag at C-terminus, was expressed in Mammalian cells.
Species	Human
Source	Mammalian Cells
Description	This gene encodes a member of the vascular endothelial growth factor receptor (VEGFR) family. VEGFR family members are receptor tyrosine kinases (RTKs) which contain an extracellular ligand-binding region with seven immunoglobulin (Ig)-like domains, a transmembrane segment, and a tyrosine kinase (TK) domain within the cytoplasmic domain. This protein binds to VEGFR-A, VEGFR-B and placental growth factor and plays an important role in angiogenesis and vasculogenesis. Expression of this receptor is found in vascular endothelial cells, placental trophoblast cells and peripheral blood monocytes. Multiple transcript variants encoding different isoforms have been found for this gene. Isoforms include a full-length transmembrane receptor isoform and shortened, soluble isoforms. The soluble isoforms are associated with the onset of pre-eclampsia.
Form	25 mM Tris HCl, pH 7.3, 100 mM glycine, 10% glycerol.
Molecular Mass	148 kDa
AA Sequence	MVSYWDTGVLLCALLSCLLLTGSSSGSKLKDPELSLKGTQHIMQAGQTLHLQCRGE AAHKWSLPEMVSKE SERLSITKSACGRNGKQFCSTLTLNTAQANHTGFYSCKYLAV

 Tel: 1-631-559-9269 1-516-512-3133

 Email: info@creative-biomart.com  Fax: 1-631-938-8127

 45-1 Ramsey Road, Shirley, NY 11967, USA

PTSKKKETESAIYIFISDTGRPFVEMYS EIP EIIHMTEGRELVIPCRVTSPNITVTLKKFP
 LDTLIPDGKRIIWDSRKGFIISNATYKEIGLLTCEAT VNGHLYKTNYLTHRQTNTIIDVQI
 STPRPVKLLRGHTLVLNCTATTPLNTRVQMTWSYPDEKNKRASVRR RIDQSN SHAN
 IFYSVLTIDKMQNKDGLYTCRVRSGPSFKSVNTSVHIYDKAFITVKHRKQQVLETVA
 GK RSYRLSMKVKAFPSPEVVWLKDGLPATEKSARYLTRGYSLIIKDVTEEDAGNYTI
 LLSIKQSNVFNLTAL TLIVNVKQIYEKAVSSFPDPALYPLGSRQILTCTAYGIPQPTIK
 WFWHPCNHNHSEARCFCSNNEESF ILDADSNMGNRIESITQRMAIIEGKNKMAST
 LVVADSRISGIYICIASNKVGTVGRNISFYITDVPNGFH VNLEKMPTEGEDLKL SCTVN
 KFLYRDVTWILLRTVNNRTMHYSISKQKMAITKEHSITLNLTIMNVSLQD SGTYACRA
 RNVYTGEEILQKKEITIRDQEAPYLLRNLSDHTVAISSSTTLDCHANGVPEPQITWFKN
 NHK IQQEPGIILGPGSSTLFIERVTEEDEGVYHCKATNQKGSVESSAYLTVQGTSDK
 SNLELITLTCTCVAAT LFWLLLTLFIRKMKRSSSEIKTDYLSIIMDPDEVPLDEQCERLP
 YDASKWEFARERLKLKSLGRGAFGK VVQASAFGIKKSPTCRTCRTVAVKMLKEGATAS
 EYKALMTELKILTHIGHHLNVVNLGACTKQGGPLMVIVE YCKYGNLSNYLKSKRDL
 FFLNKDAALHMEPKKEKMEPGLEQGKKPRLDSVTSSSEFASSGFQEDKSLSDV EE
 EEDSDGFYKEPITMEDLISYSFQVARGMEFLSSRKC IHRDLAARNILLSENN VVKICD
 FGLARDIYKN PDYVRKGDTRLPLKWMAPESIFDKIYSTKSDVWSYGVLLWEIFSLGG
 SPYPGVQMDEDFCSRLREGMRMR APEYSTPEIYQIMLDCWHRDPKERPRFAELVE
 KLGDLLQANVQQDGKDYIPINAILTGNSGFTYSTPAFS EDDFKESISAPKFNSGSSDD
 VRYVNAFKFMSLERIKTFEELLPNATSMFDDYQGDSSTLLASPM LKRFTW TDSKPK
 ASLKIDLRVTSKSKESGLSDVSRPSFCHSSCGHVSEGKRRFTYDHAELERKIACCSP
 PPDYNSV
 VLYSTPPITRTRPLEQKLISEEDLAANDILDYKDDDDKV

Purity > 80% as determined by SDS-PAGE and Coomassie blue staining.

Stability Stable for 12 months from the date of receipt of the product under proper storage and handling conditions. Avoid repeated freeze-thaw cycles.

Storage Store at -80 centigrade.

 Tel: 1-631-559-9269 1-516-512-3133

 Email: info@creative-biomart.com  Fax: 1-631-938-8127

 45-1 Ramsey Road, Shirley, NY 11967, USA

Concentration	>50 ug/mL as determined by microplate BCA method.
Preparation	Recombinant protein was captured through anti-DDK affinity column followed by conventional chromatography steps.
Protein Families	Druggable Genome, Protein Kinase, Secreted Protein
Protein Pathways	Cytokine-cytokine receptor interaction, Endocytosis, Focal adhesion
Full Length	Full L.

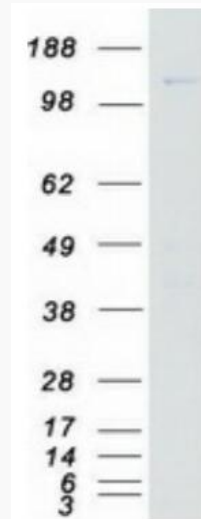
GENE INFORMATION

Gene Name	FLT1 fms related receptor tyrosine kinase 1 [Homo sapiens (human)]
Official Symbol	FLT1
Synonyms	FLT; FLT-1; VEGFR1; VEGFR-1
Gene ID	2321
mRNA Refseq	NM_002019.4
Protein Refseq	NP_002010.2
MIM	165070
UniProt ID	P17948

 Tel: 1-631-559-9269 1-516-512-3133

 Email: info@creative-biomart.com  Fax: 1-631-938-8127

 45-1 Ramsey Road, Shirley, NY 11967, USA



Coomassie blue staining of purified FLT1 protein.

 Tel: 1-631-559-9269 1-516-512-3133

 Email: info@creative-biomart.com  Fax: 1-631-938-8127

 45-1 Ramsey Road, Shirley, NY 11967, USA