

Recombinant Pig FLT1 protein, His & GST-tagged

Cat. No. FLT1-1839P Lot. No. (See product label)

SPECIFICATION

Product Overview	Recombinant Pig FLT1 aa. (Pro167~Ala424) fused with N-terminal His & GST tag was produced in E. coli cells.
Species	Pig
Source	E.coli
ProteinLength	Pro167~Ala424
Form	Freeze-dried powder
Molecular Mass	59kDa as determined by SDS-PAGE reducing conditions.
Endotoxin	<1.0EU per 1ug (determined by the LAL method)
Purity	>98%
Characteristic	The isoelectric point is 8.6.
Applications	SDS-PAGE; WB; ELISA; IP; CoIP; Reporter Assays; Purification; Amine Reactive Labeling.
Stability	The thermal stability is described by the loss rate of the target protein. The loss rate was determined by accelerated thermal degradation test, that is, incubate the protein at 37°C for 48h, and no obvious degradation and precipitation were observed.

 Tel: 1-631-559-9269 1-516-512-3133

 Email: info@creative-biomart.com  Fax: 1-631-938-8127

 45-1 Ramsey Road, Shirley, NY 11967, USA

(Referring from China Biological Products Standard, which was calculated by the Arrhenius equation.) The loss of this protein is less than 5% within the expiration date under appropriate storage condition.

Storage

Avoid repeated freeze/thaw cycles. Store at 2-8°C for one month. Aliquot and store at -80°C for 12 months.

Concentration

200µg/mL

Storage Buffer

20mM Tris, 150mM NaCl, pH8.0, containing 1mM EDTA, 1mM DTT, 0.01% sarcosyl, 5% Trehalose and Proclin300.

Reconstitution

Reconstitute in 20mM Tris, 150mM NaCl (pH8.0) to a concentration of 0.1-1.0mg/mL. Do not vortex.

GENE INFORMATION

Gene Name

[FLT1 fms related tyrosine kinase 1 \[Sus scrofa \(pig\) \]](#)

Official Symbol

[FLT1](#)

Synonyms

LIPF; lipase F, gastric type; GL; HGL; HLAL; gastric triacylglycerol lipase; gastric lipase; lipase, gastric

Gene ID

[396763](#)

mRNA Refseq

[XM_021065525.1](#)

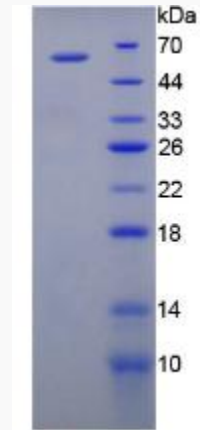
Protein Refseq

[XP_020921184.1](#)

 Tel: 1-631-559-9269 1-516-512-3133

 Email: info@creative-biomart.com  Fax: 1-631-938-8127

 45-1 Ramsey Road, Shirley, NY 11967, USA



SDS-PAGE

 Tel: 1-631-559-9269 1-516-512-3133

 Email: info@creative-biomart.com  Fax: 1-631-938-8127

 45-1 Ramsey Road, Shirley, NY 11967, USA