

Recombinant Rhesus macaque FLT1 protein, Mouse IgG2a Fc-tagged, low endotoxin

Cat. No. FLT1-379R Lot. No. (See product label)

SPECIFICATION

Product Overview

Recombinant Rhesus macaque FLT1 protein (Ser27-Asn756)(low endotoxin), fused to Mouse IgG2a Fc tag at C-terminus, was expressed in human 293 cells (HEK293).

Species

Rhesus macaque

Source

HEK293

ProteinLength

730

Description

Vascular endothelial growth factor receptor 1 (VEGFR1) is also known as Fms-like tyrosine kinase 1 (FLT-1), Tyrosine-protein kinase receptor FLT, is a single-pass type I membrane protein and secreted protein which belongs to the protein kinase superfamily, Tyr protein kinase family and CSF-1/PDGF receptor subfamily. VEGFR1 is detected in normal lung, but also in placenta, liver, kidney, heart and brain tissues and specifically expressed in most of the vascular endothelial cells, and also expressed in peripheral blood monocytes. VEGFR1 acts as a cell-surface receptor for VEGFA, VEGFB and PGF, and plays an essential role in the development of embryonic vasculature, the regulation of angiogenesis, cell survival, cell migration, macrophage function, chemotaxis, and cancer cell invasion. VEGFR1 may play an essential role as a negative regulator of embryonic angiogenesis by inhibiting excessive proliferation of endothelial cells. VEGFR1 can promote endothelial cell proliferation, survival and angiogenesis in adulthood.

 Tel: 1-631-559-9269 1-516-512-3133

 Email: info@creative-biomart.com  Fax: 1-631-938-8127

 45-1 Ramsey Road, Shirley, NY 11967, USA

Form	Lyophilized from 0.22 um filtered solution in Tris with Glycine, Arginine and NaCl, pH7.5, 10% trehalose.
Molecular Mass	The protein has a calculated MW of 109.1 kDa. The protein migrates as 130 kDa under reducing (R) condition (SDS-PAGE) due to glycosylation.
Endotoxin	Less than 0.1 EU per ug by the LAL method.
Purity	>95% as determined by SDS-PAGE.
Storage	For long term storage, the product should be stored at lyophilized state at -20 centigrade or lower. Please avoid repeated freeze-thaw cycles. This product is stable after storage at: -20 centigrade to -70 centigrade for 12 months in lyophilized state; -70 centigrade for 3 months under sterile conditions after reconstitution.
Reconstitution	It is recommended that sterile water be added to the vial to prepare a stock solution of 0.2 ug/ul. Centrifuge the vial at 4°C before opening to recover the entire contents.

GENE INFORMATION

Gene Name	FLT1
Official Symbol	FLT1
Synonyms	FLT, FLT-1, VEGFR-1, VEGFR1
Gene ID	574133
mRNA Refseq	XM_001117928.4

 Tel: 1-631-559-9269 1-516-512-3133

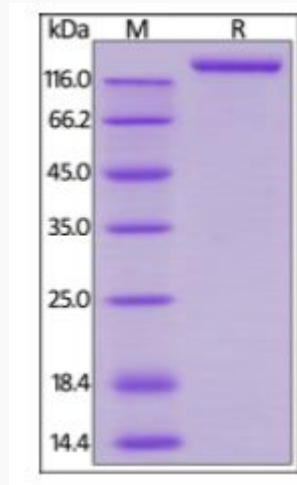
 Email: info@creative-biomart.com  Fax: 1-631-938-8127

 45-1 Ramsey Road, Shirley, NY 11967, USA

Protein Refseq XP_001117928.3

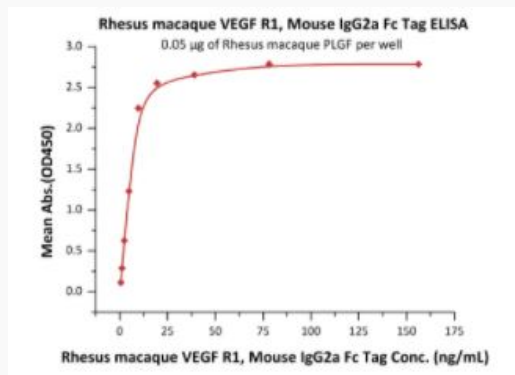
UniProt ID F7FAY2

SDS-PAGE of FLT1-379R



Rhesus macaque VEGFR1, Mouse IgG2a Fc Tag, low endotoxin on SDS-PAGE under reducing (R) condition. The gel was stained overnight with Coomassie Blue. The purity of the protein is greater than 95%.

Bioactivity-ELISA of FLT1-379R



Immobilized Rhesus macaque PLGF at 0.5

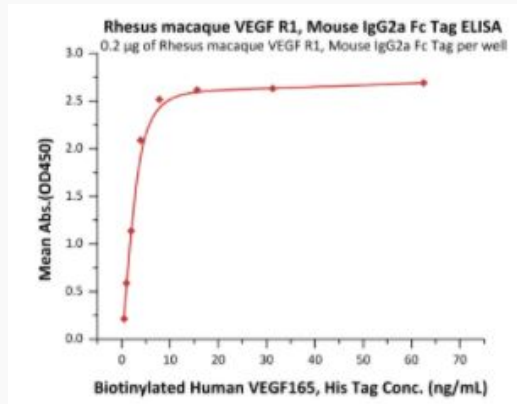
Tel: 1-631-559-9269 1-516-512-3133

Email: info@creative-biomart.com Fax: 1-631-938-8127

45-1 Ramsey Road, Shirley, NY 11967, USA

μg/mL (100 μL/well) can bind Rhesus macaque VEGF R1, Mouse IgG2a Fc Tag, low endotoxin with a linear range of 0.6-10 ng/mL (QC tested).

**Bioactivity-ELISA of
FLT1-379R**



Immobilized Rhesus macaque VEGFR1, Mouse IgG2a Fc Tag, low endotoxin at 2 μg/mL (100 μL/well) can bind Biotinylated Human VEGF165, His Tag with a linear range of 0.5-3.9 ng/mL (Routinely tested).

Tel: 1-631-559-9269 1-516-512-3133

Email: info@creative-biomart.com Fax: 1-631-938-8127

45-1 Ramsey Road, Shirley, NY 11967, USA